



A new standard of living with UCL

We are pleased to announce that UCL is offering staff and PhD students the opportunity to live in brand-new UCL housing at urbanest Canary Wharf.



Perfectly placed for campus

Our ground-breaking new community hub is made up of 80 self-contained 1, 2 and 3 bedroom apartments right in the heart of the exciting new Canary Wharf development.

Designed and built to Passivhaus environmental standards, these high quality, fully-furnished serviced apartments make an ideal base for colleagues working across our campuses.





Local Area

Situated in Canary Wharf, this property is in the London borough of Tower Hamlets.

Everything in one place:

Shops, gyms, cafés and parks are all within a short walk.

Fast, reliable transport:

Quick links to UCL East, Bloomsbury and the rest of London via the Elizabeth line, Jubilee line and DLR.

Safe, modern living:

Clean, well-lit neighbourhood with high-quality new build apartments and great amenities.

Schools:

Primary and secondary schools within walking distance in Poplar catchment area.

Residents can also enjoy £1 entry to Tower of London through the Community Access Scheme.



What's included in the rent

- Rents are all-inclusive – all utility bills and high-speed Wi-Fi are included
- 24-hour concierge and parcel room
- Maintenance, management and facilities services for the apartment and building, including a 24-hour helpdesk for routine and emergency repairs provided by urbanest.

Live in a self-contained flat with easy access to shared social spaces where you can connect with other members of the UCL community.

Amenities

Residents' Lounge and flexible-use shared communal spaces suitable for group gatherings and activities.

We welcome interest from residents with additional requirements. There are eight flats that can be adapted to meet DDA compliant accessibility need. We encourage you to contact our team to discuss suitability in more detail.

urbanest Canary Wharf

Level 9





Exclusive prices for the UCL community

Apartment Type	Units	Rent (pcm)	Size (m ²)	Occupancy
1 Bedroom	24	£1,780	40	1
1 Bedroom + Study	22	£2,340	46–52	1–2
2 Bedroom	18	£3,255	83–85	3–4
3 Bedroom	14	£3,410	83	4
3 Bedroom Duplex	1	£3,815	133	5
3 Bedroom Deluxe	1	£3,970	156	5

There are 80 apartments available, all located between floors 4-28.

Tenancy Information

- 12-month tenancy
- Rent to be paid monthly in advance
- Deposit: 1 month's rent
- Move in from 1 September 2026
- Renewals negotiable with 2 months' notice
- Six-month tenant break clause (1 month notice)
- Tenancy contracted directly with UCL, with urbanest responsible for facilities management on-site

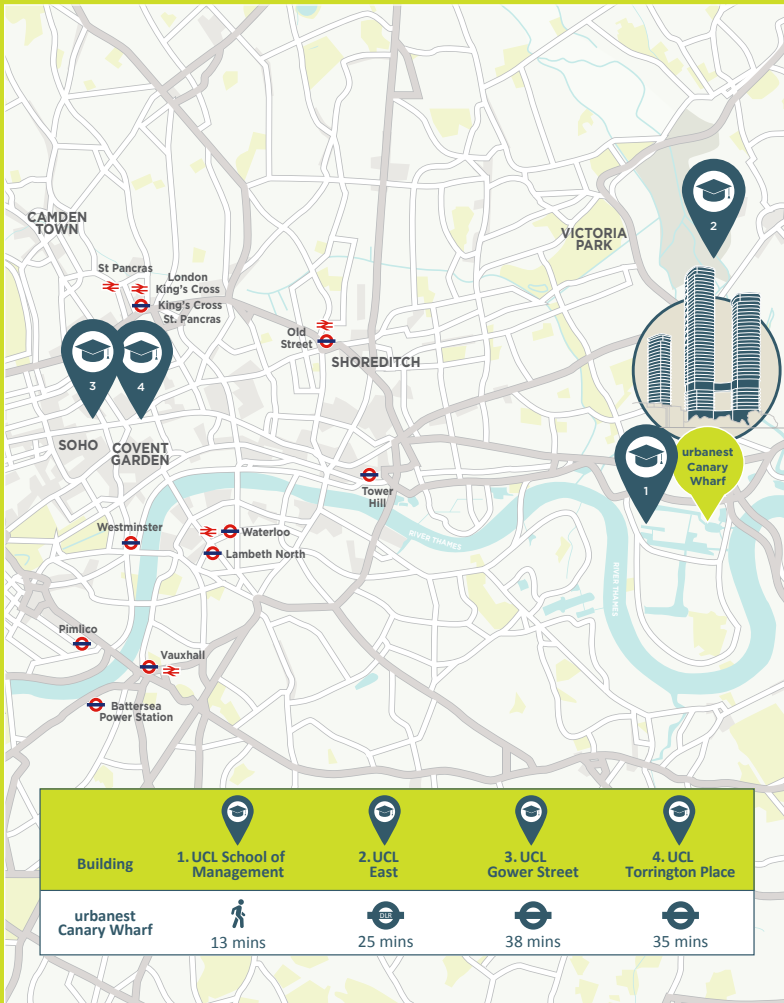
Eligibility and Restrictions

- One resident must be UCL Staff, including PhD students*
- Two personal references + credit check
- No pets
- No smoking
- No electric bikes stored on-site

Furnishings

All apartments include beds, mattresses, sofa, dining table with chairs and are fitted with a TV aerial point. Each self-contained apartment has installed appliances, including a refrigerator, washing machine/tumble drier, and a dishwasher.

*This may be opened up to a wider audience based on demand.



Our ground-breaking new community hub is just a 15 minute walk from the School of Management and has excellent transport links to both UCL East and Bloomsbury.

Built to Passivhaus standards

Residents will enjoy exceptional energy efficiency and year-round indoor comfort. As part of the largest Passivhaus development in the UK, your building's super-insulated exterior helps to maintain an ideal internal temperature and filters out city pollution, sound and allergens, creating a healthier, quieter and more sustainable living environment.



Be ahead of the game

This is your chance to be among the first to enjoy a new standard of comfort, convenience and support in the heart of Canary Wharf – with rents lower than typical market rates. 12-month tenancy with UCL, with urbanest responsible for facility management.

Contact us now for more information

Ready to see more? Get in touch to arrange a viewing at urbanest.canarywharf@ucl.ac.uk

For more details and to view the floorplans, visit the [urbanest website](https://www.urbanest.com).