



**BAT**



# urbanest Battersea

urbanest Battersea student accommodation, overlooking the River Thames and the iconic chimneys of Battersea Power Station. This is our brand-new nest, which provides sector leading energy efficient student accommodation, with incredible views of London and easy access to many universities around central London.

Battersea has seen a huge scale of development in recent years, making this thriving corner of London an ideal spot for students. With a zone 1 tube station minutes from the front door, and plenty of hospitality, retail and activities on your doorstep, our Battersea student accommodation is part of a thriving new neighbourhood. It is also a building leading the charge for sustainability through its Passivhaus construction, which will deliver a living environment offering controlled air temperature providing heating and cooling across the year.

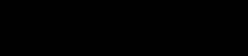
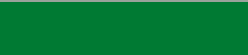
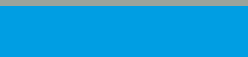




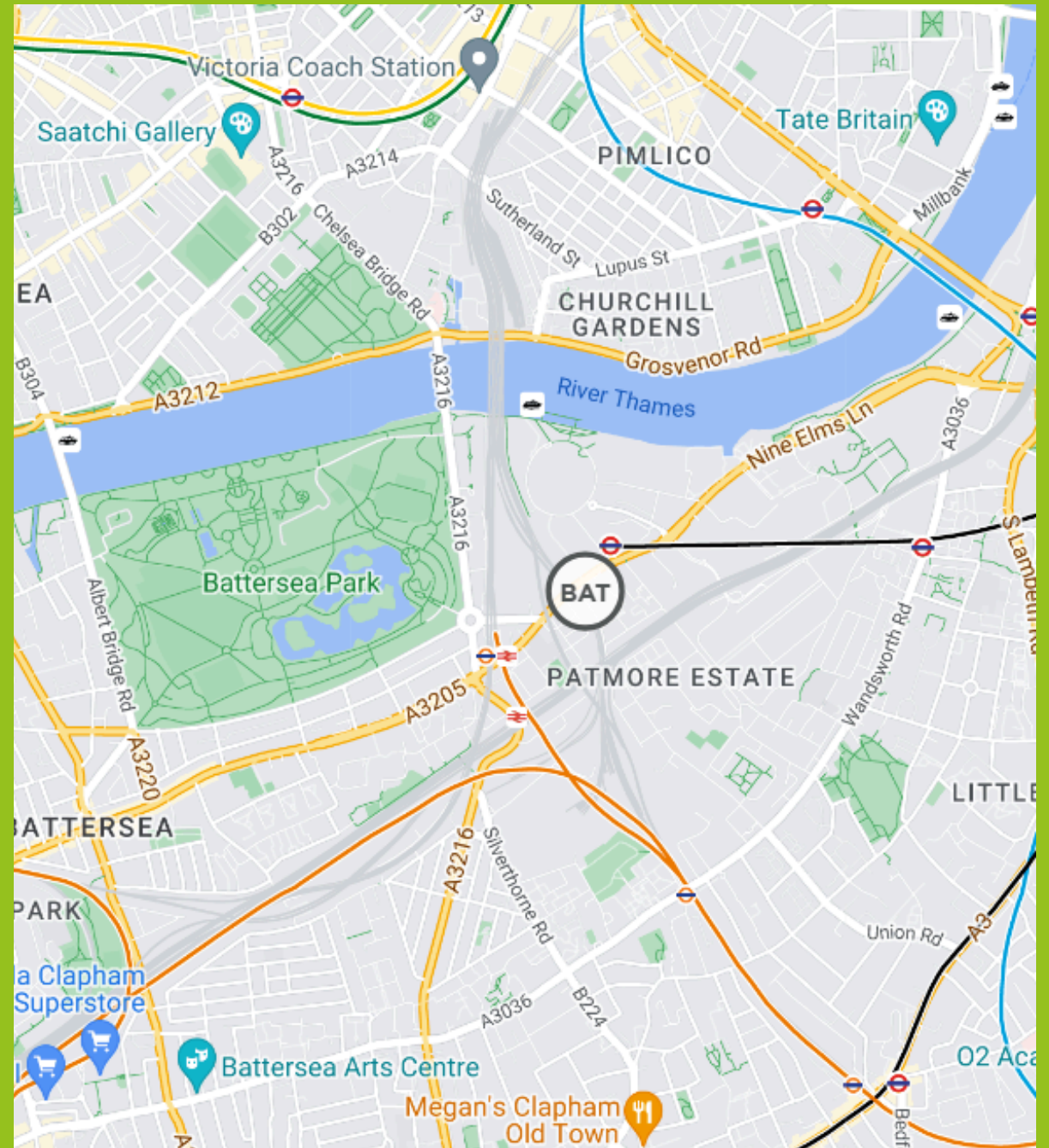


# Transport Links

Just outside of our Battersea student accommodation is the Battersea tube line. This new line extends from Kenington and connects to the Northern line, giving Battersea residents easy access to tube lines across Zone 1 and beyond. The Battersea Park Bus station is also just a 5-minute walk away, and Clapham Junction train station offers direct trains to Waterloo, London Victoria and outside of London.

But if that is not your style, you could make use of the short walk to the River Thames and take the River Bus, which will get you to central London within 20 minutes.

	Northern Line
	District Line
	Victoria Line
	Overground
	River Boat services



## Distance To Universities



Battersea's location makes accessing campuses across the city easy. With a tube station just outside your accommodation, you can reach Universities across the capital within a few stops.

Along the Northern Line, you have easy access to London's top universities, including King's College London, LSE and University College London main campus.

Other Universities close to Battersea include the Imperial College London, University of Roehampton and the University of Westminster.

We have student accommodation right across the capital, so if Battersea isn't an ideal location, our other options may be just what you're looking for.



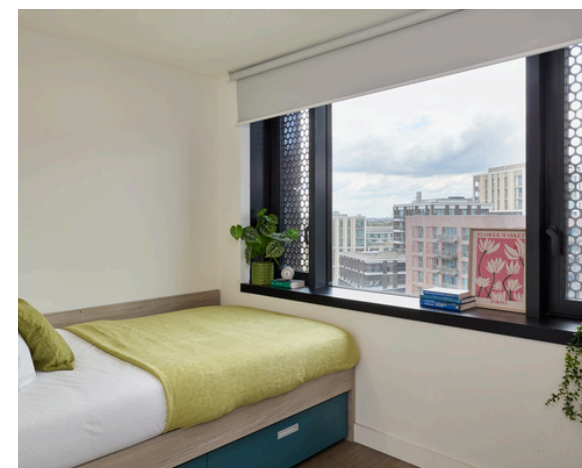
# Room Specs

Rooms within larger apartments have shared kitchen facilities. The kitchen has everything you need including a fridge/freezer, microwave oven, ceramic hob, extensive cupboard space, stone worktops and a dishwasher. These apartments also have shared living areas which are great spaces for making new friends. The bathroom facilities are also of the highest specification.

Whichever of the student accommodation types you choose in our City site, all of our rooms have super comfortable beds with a high-quality memory foam mattress to give you a great night's sleep and every room has luxurious under-floor heating which is controlled by an individual thermostat in your room to keep you warm in the winter months. Super-fast broadband keeps you connected and the entire building (including all study and social areas) benefits from free Wi-Fi.

In addition, the rooms are extremely well appointed in general with every student benefiting from a spacious, fitted study desk, plenty of storage for clothes, shoes and books and, depending on the room you choose, either a private or a shared kitchen with first-class appliances.

BATTERSEA	STUDIO	SHARED FLAT
KITCHEN		
Hob	✓	✓
Convection Oven	✓	✓
Microwave	✓	✓
Dishwasher	✗	✓
Fridge-Freezer	✓	✓
Storage Space	✓	✓
Kitchen Bin	✗	✓
Pots/ Pans	✗	✗
Cutlery/ Crockery	✗	✗
Laundry Facilities	On-site	On-site
Blinds/ Curtains	✓	✓
Internet (up to 200 mbps)	✓	✓
BEDROOM		
Bed Size (in cm)	120 x 190	120 x 190
Desk & Desk Chair	✓	✓
Lamp / Reading Light	✓	✓
Blinds / Curtains	✓	✓
Wardrobe	✓	✓
Wastepaper Bin	✓	✓
Mattress	✓	✓
Bedding	✗	✗
Shelf Storage	✓	✓
Internet (up to 200 mbps)	✓	✓
Mirror	✓	✓

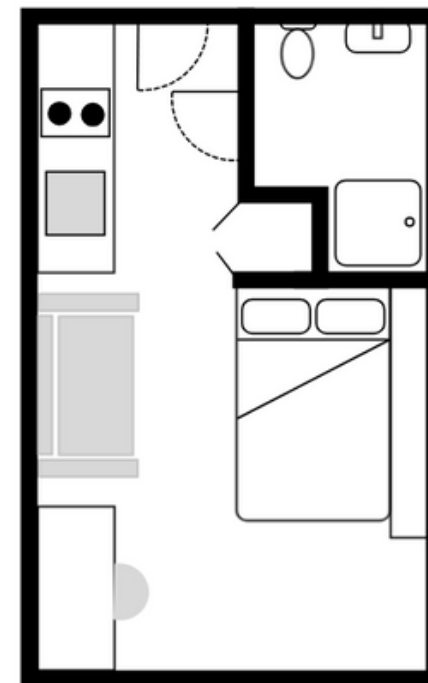


All images and floor plans are indicative and specific rooms may differ slightly in layout and positioning.



# Studio room

A spacious and modern studio apartment. Each studio features a small double bed with memory foam mattress, built-in desk and desk chair, underfloor heating, galley kitchen with modern appliances such as a ceramic hob, microwave/grill and fridge/freezer. There is also a comfortable seating area, spacious storage and wardrobe space. Our studio apartments are an excellent choice for independent living.

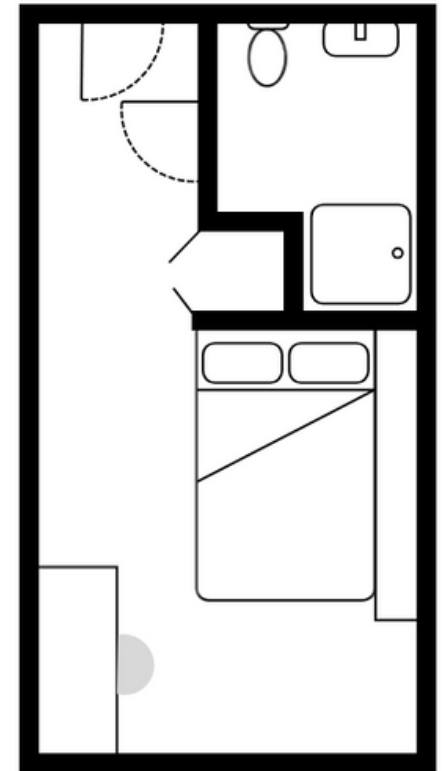


All images and floor plans are indicative and specific rooms may differ slightly in layout and positioning.



## En-suite room

Each of the stunning lockable bedrooms features a built-in desk and desk chair in front of a panoramic window, a bed with memory foam mattress, lots of storage and under floor heating. In addition, each bedroom has a separate luxury en-suite shower room. The residents of this shared apartment share a large kitchen with island and living area including microwave/grill, ceramic hob, fan oven and a dishwasher.

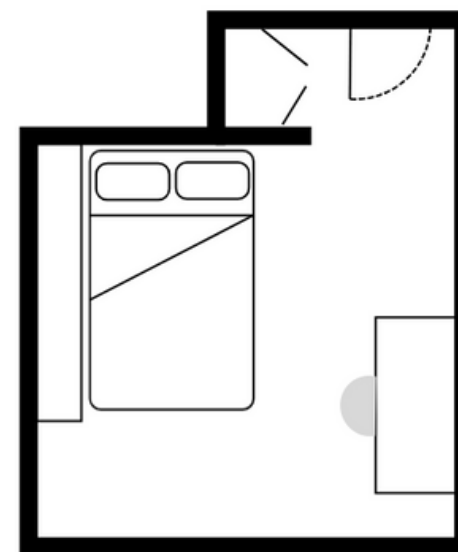


All images and floor plans are indicative and specific rooms may differ slightly in layout and positioning.



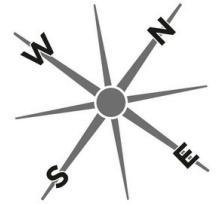
## Private room

A beautiful private, lockable bedroom sharing a kitchen and shower rooms with just others in a modern five or six-bedroom apartment. Featuring a built in desk, desk chair, wardrobe and a bed; our private rooms are perfect for sharing with friends (or making new ones) and excellent value for money.



All images and floor plans are indicative and specific rooms may differ slightly in layout and positioning.





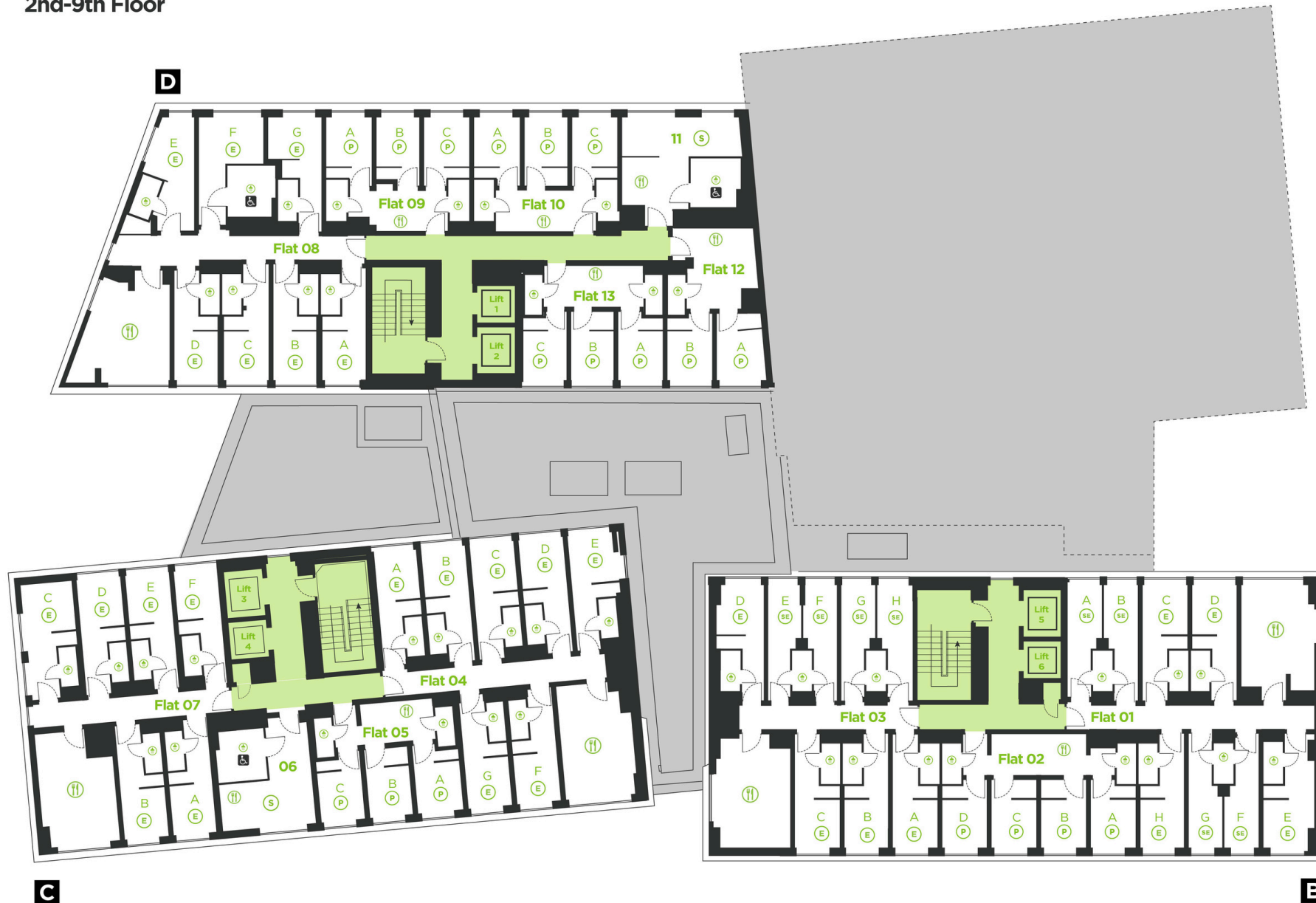
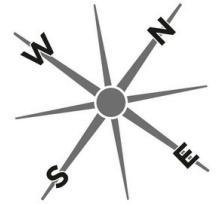
Key	
	Shower Room
	Kitchen
	Private Room
	Shared en-suites
	En-suites
	Studio Apartment



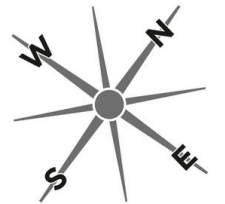
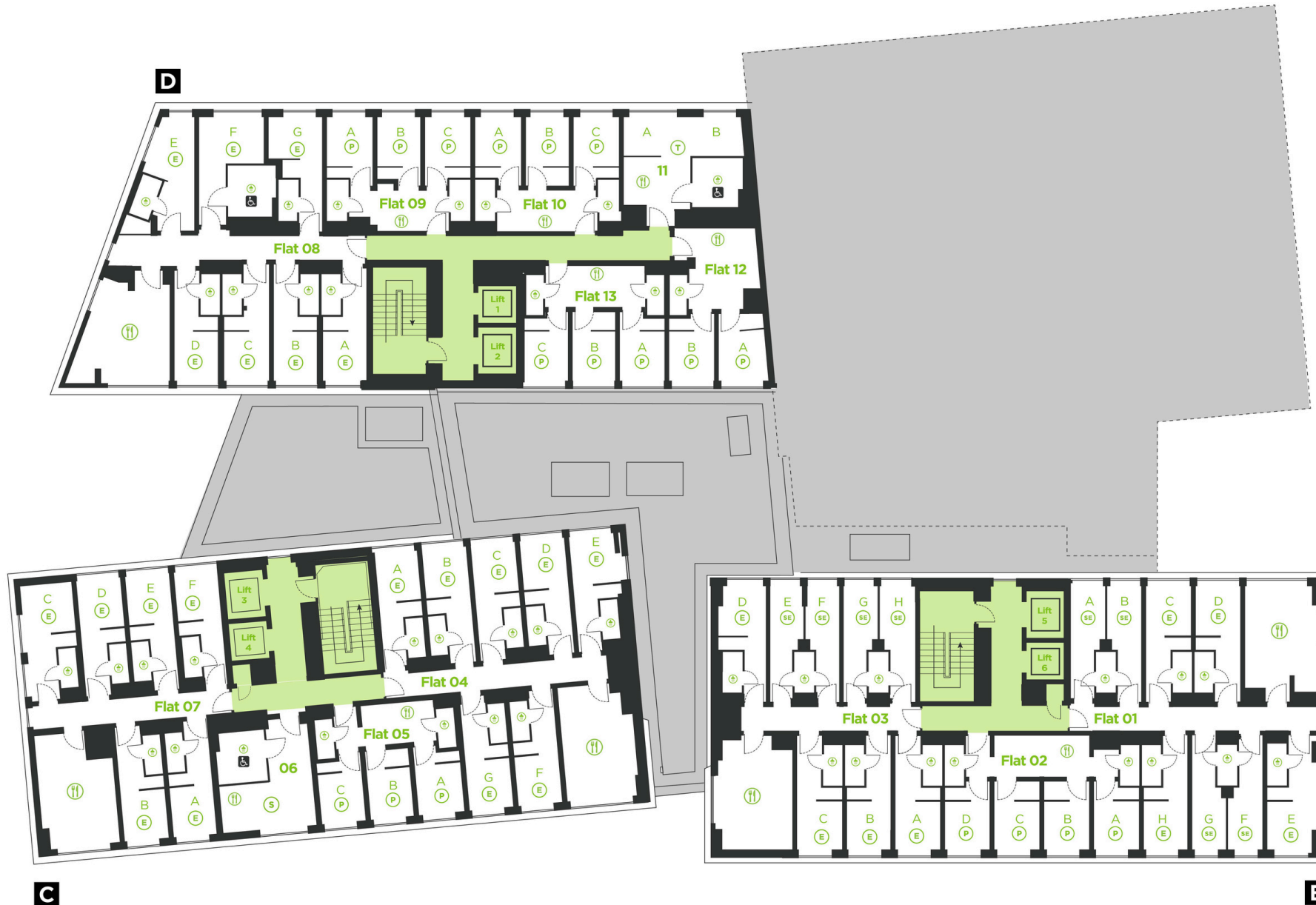
# urbanest Battersea

Palmerston Court, London SW8 4AS

2nd-9th Floor



Key	
	Shower Room
	Kitchen
	Private Room
	Shared en-suites
	En-suites
	Studio Apartment



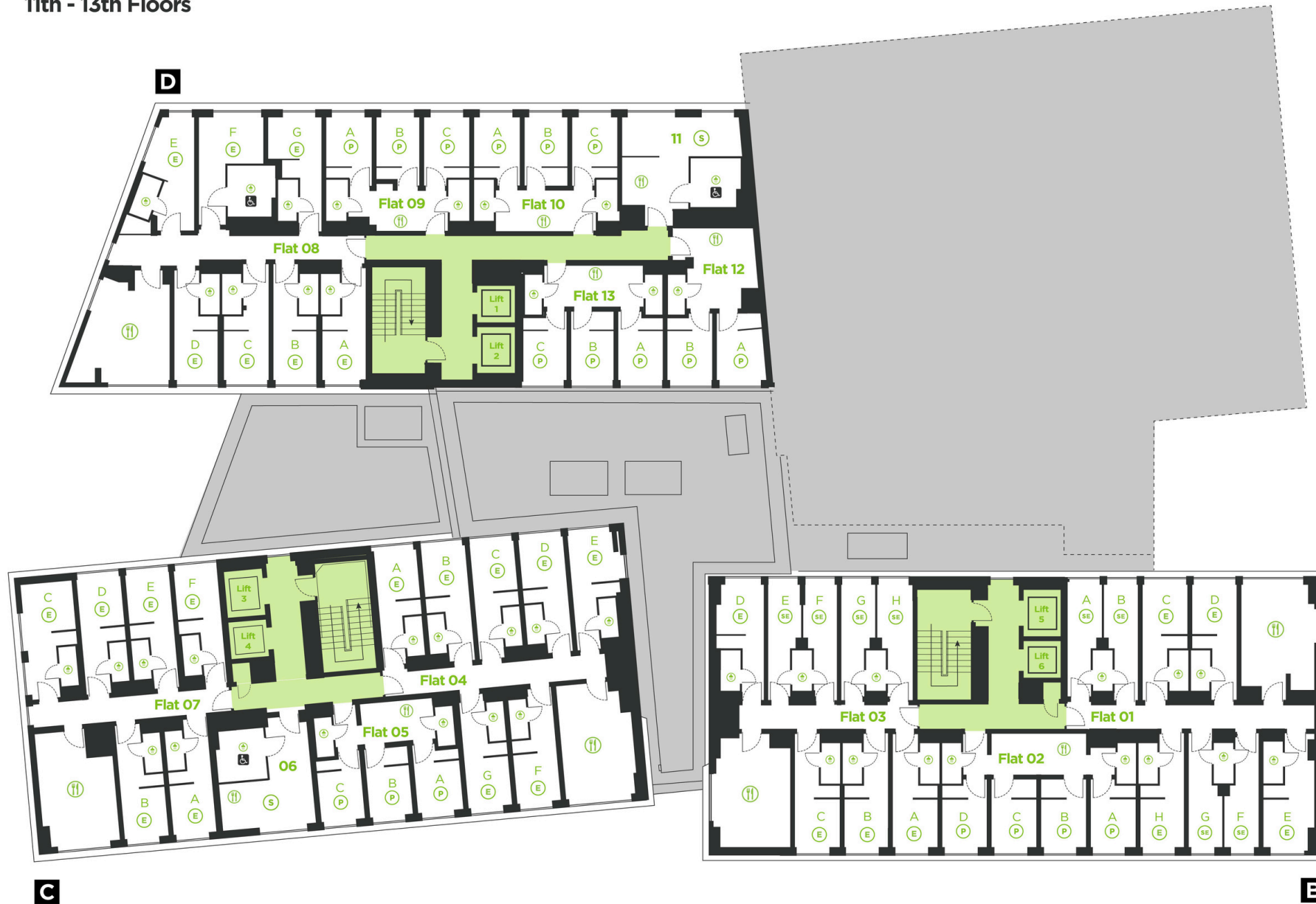
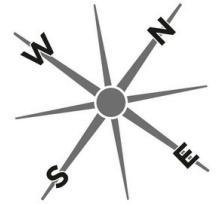
Key	
	Shower Room
	Kitchen
	Private Room
	Shared en-suites
	En-suites
	Studio Apartment
	Twin room



# urbanest Battersea

Palmerston Court, London SW8 4AS

11th - 13th Floors

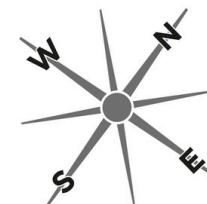


Key	
	Shower Room
	Kitchen
	Private Room
	Shared en-suites
	En-suites
	Studio Apartment

# urbanest Battersea

Palmerston Court, London SW8 4AS

14th-16th floors



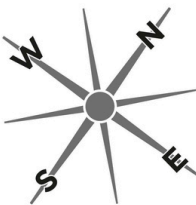
Key	
	Shower Room
	Kitchen
	Private Room
	Shared en-suites
	En-suites
	Studio Apartment



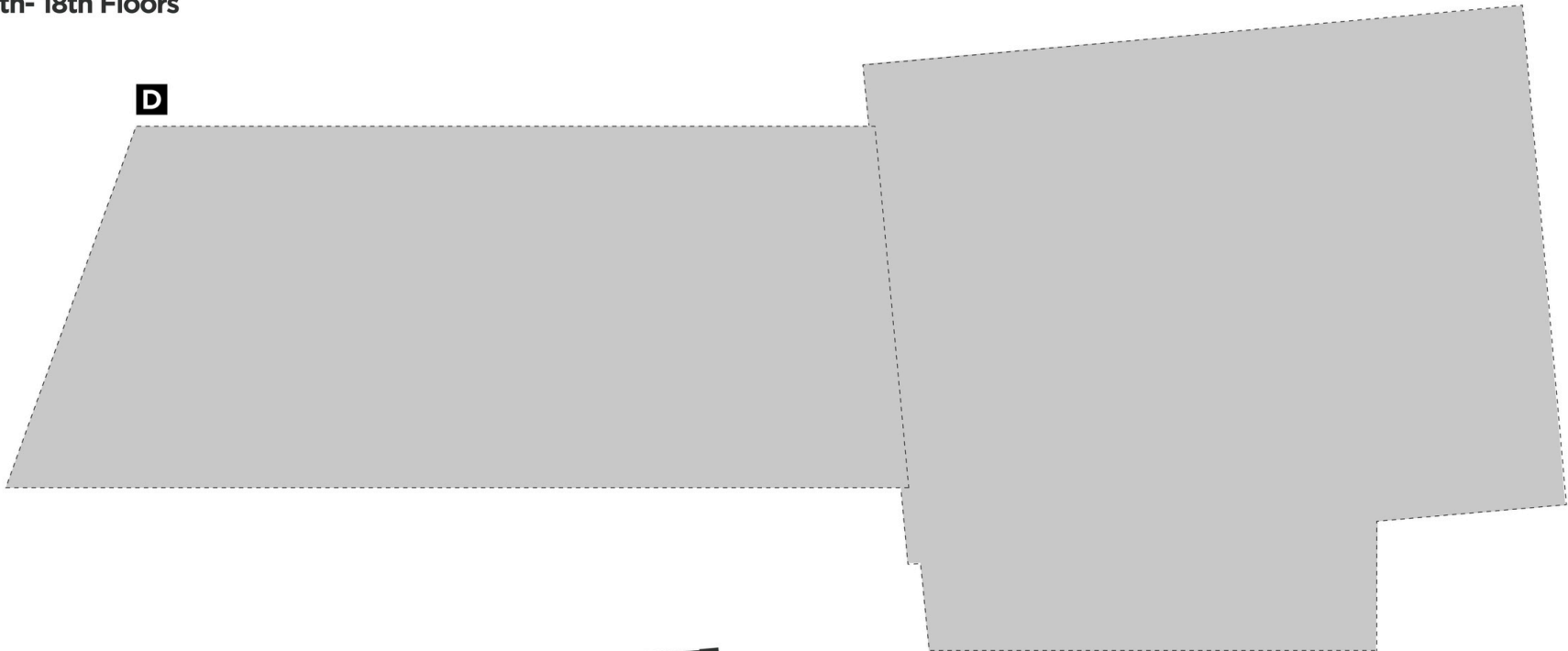
# urbanest Battersea

Palmerston Court, London SW8 4AS

17th- 18th Floors



D



C

B

Key	
	Shower Room
	Kitchen
	Private Room
	Shared en-suites
	En-suites
	Studio Apartment