



Contents:

- 1** urbanest City
- 2** Transport Links
- 3** Distance To Universities
- 4** Room Specs
- 5-7** Room Types
- 8-17** Floor plans



urbanest City

Designed to inspire, urbanest City is located in the heart of the historic City of London, just 4-minute walk from Tower Hill tube station and close to many major London universities. Our newest property is dedicated to inspiring our residents to fulfil their academic, cultural, and social aspirations during their time in London. urbanest City is brilliantly located right in the heart of London and is close many local bars and lots of nightlife. The City of London is now home to many of London's best bars and restaurants and the award-winning 'Flock' and 'Mayfair Chippy' are two that are just on the doorstep. Old Spitalfields Market is a thriving shopping, eating and socialising hub and borders Brick Lane and East London's hip Shoreditch area with its galleries, clubs, bars, coffee shops and boutique shopping.







Foodies also won't be missing out here – head south to Borough Market and you can sample delicacies from all over the globe. The fashionable Bermondsey Street area houses many fashionable bars and restaurants. Bankside also provides many options for a day out with the Globe Theatre and the Tate Modern, both within walking distance.

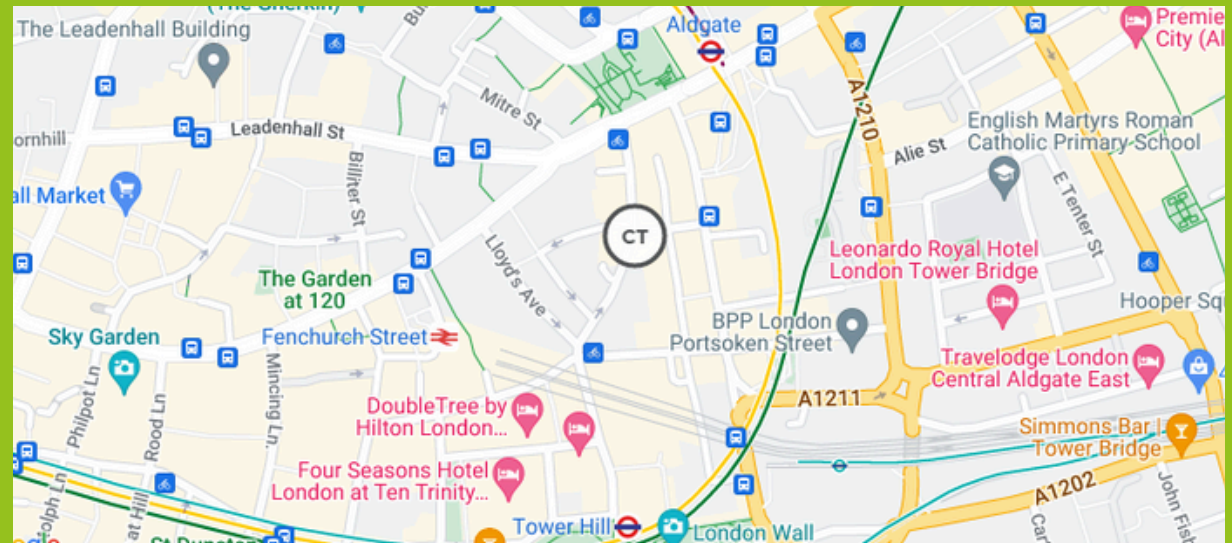
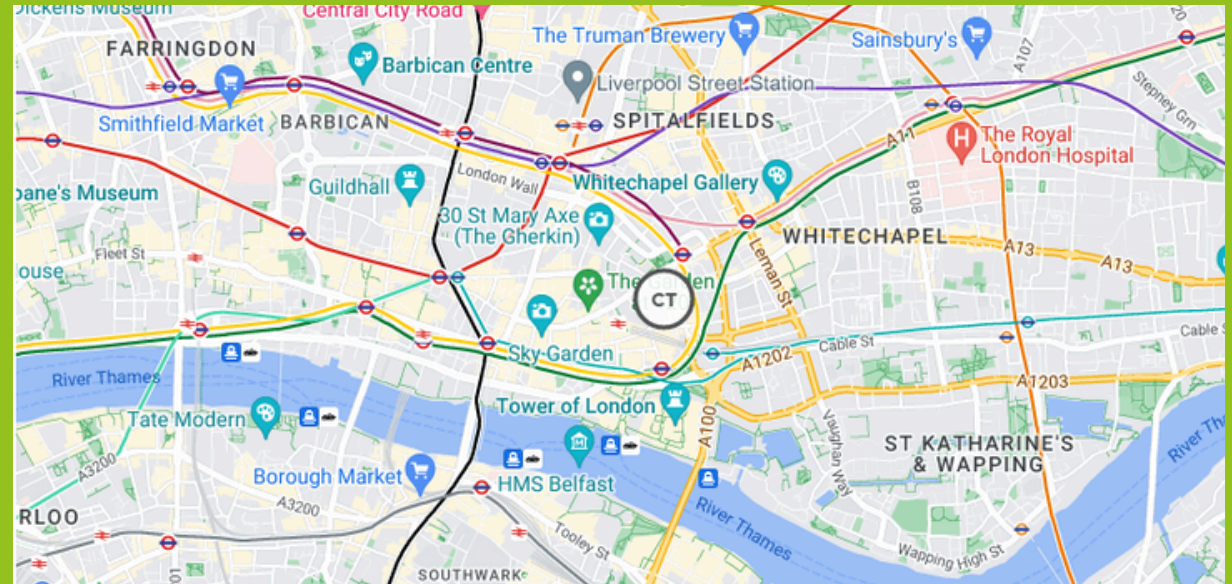
A short walk from urbanest City to London Liverpool Street station gives direct access (8 mins) to London's Olympic Park and the major shopping destination, Westfield Stratford.



Transport Links

Tower Hill and Aldgate tube stations are a few minutes walk from urbanest City student accommodation and give easy access to the Circle Line, the District Line and the Metropolitan Line. Tower Gateway DLR station is also a 2-minute walk away and connects to Canary Wharf, East London and Greenwich to the south of the Thames. Given its central location, this student accommodation near London Bridge also benefits from many bus routes available from just outside the building that will take you right across the city. Tower Millennium Pier is also close by and can be accessed using London's fast-developing river taxi service. The transport links to and from urbanest City are fantastic which makes this student accommodation a great option for the academic year.

	Hammersmith & City Line
	District Line
	Circle Line
	Metropolitan Line
	DLR
	Elizabeth Line



Distance To Universities



urbanest City is in a fantastic Tower Bridge location and is within walking distance of several major London universities including:

- London Metropolitan University
- Queen Mary University of London
- Coventry University London

It is also just a few tube stops or a bus ride from many other universities such as:

- London South Bank University
- King's College London (KCL)
- University College London (UCL)
- London School of Economics (LSE)

urbanest City student accommodation is one of the best places to be based for your time in London because of its proximity to so many universities and transport links. However, if you're still not sure it's for you, then check out our Tower Bridge accommodation nearby or other locations for more options.

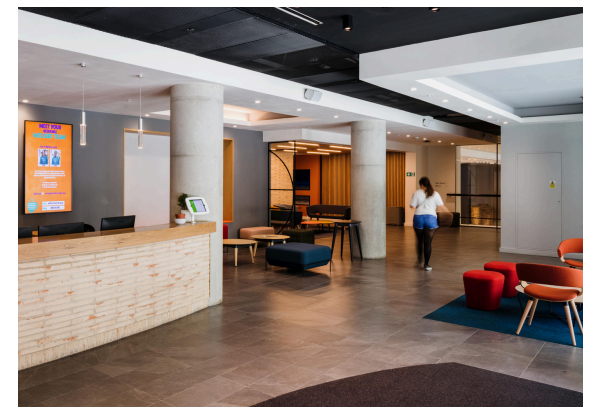
Room Specs

Rooms within larger apartments have shared kitchen facilities. The kitchen has everything you need including a fridge/freezer, microwave oven, ceramic hob, extensive cupboard space, stone worktops and a dishwasher. These apartments also have shared living areas which are great spaces for making new friends. The bathroom facilities are also of the highest specification.

Whichever of the student accommodation types you choose in our City site, all of our rooms have super comfortable beds with a high-quality memory foam mattress to give you a great night's sleep and every room has luxurious under-floor heating which is controlled by an individual thermostat in your room to keep you warm in the winter months. Super-fast broadband keeps you connected and the entire building (including all study and social areas) benefits from free Wi-Fi.

In addition, the rooms are extremely well appointed in general with every student benefiting from a spacious, fitted study desk, plenty of storage for clothes, shoes and books and, depending on the room you choose, either a private or a shared kitchen with first-class appliances.

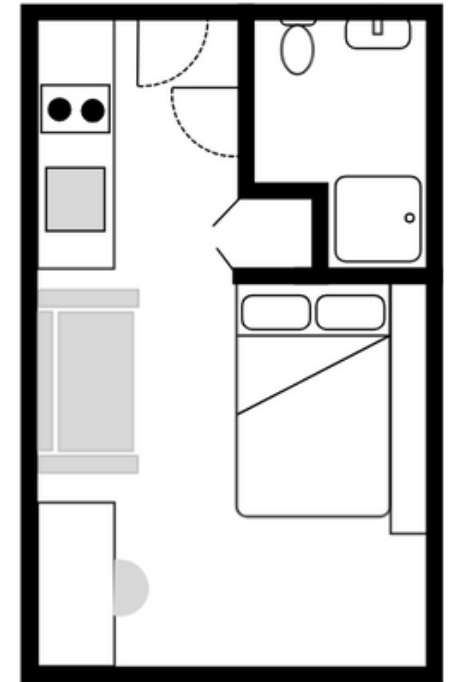
CITY	STUDIO	SHARED FLAT
KITCHEN		
Hob	✓	✓
Convection Oven	✗	✓
Microwave	✓	✓
Dishwasher	✗	✓
Fridge-Freezer	✓	✓
Storage Space	✓	✓
Kitchen Bin	✗	✓
Pots/ Pans	✗	✗
Cutlery/ Crockery	✗	✗
Laundry Facilities	On-site	On-site
Blinds/ Curtains	✓	✓
Internet (up to 200 mbps)	✓	✓
BEDROOM		
Bed Size (in cm)	120 x 190	120 x 190
Desk & Desk Chair	✓	✓
Lamp / Reading Light	✓	✓
Blinds / Curtains	✓	✓
Wardrobe	✓	✓
Wastepaper Bin	✓	✓
Mattress	✓	✓
Bedding	✗	✗
Shelf Storage	✓	✓
Internet (up to 200 mbps)	✓	✓
Mirror	✓	✓



All images and floor plans are indicative and specific rooms may differ slightly in layout and positioning.

Studio room

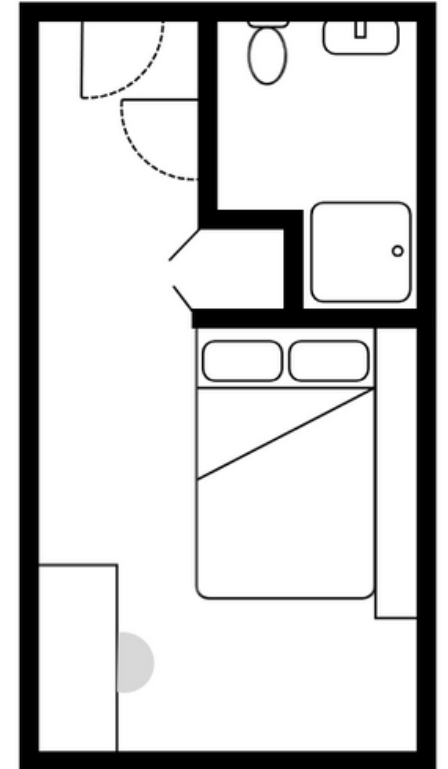
A spacious and modern studio apartment. Each studio features a small double bed with memory foam mattress, built-in desk and desk chair, underfloor heating, galley kitchen with modern appliances such as a ceramic hob, microwave/grill and fridge/freezer. There is also a comfortable seating area, spacious storage and wardrobe space. Our studio apartments are an excellent choice for independent living.



All images and floor plans are indicative and specific rooms may differ slightly in layout and positioning.

En-suite room

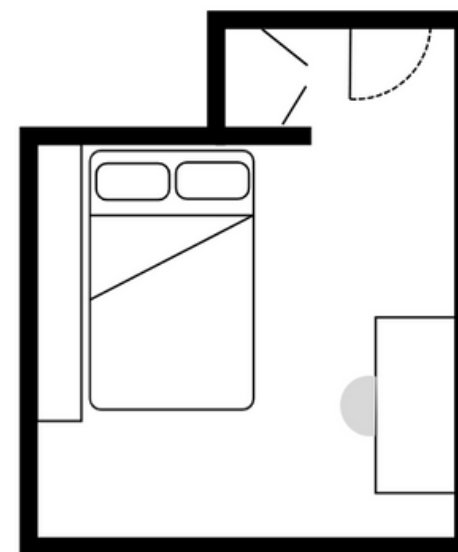
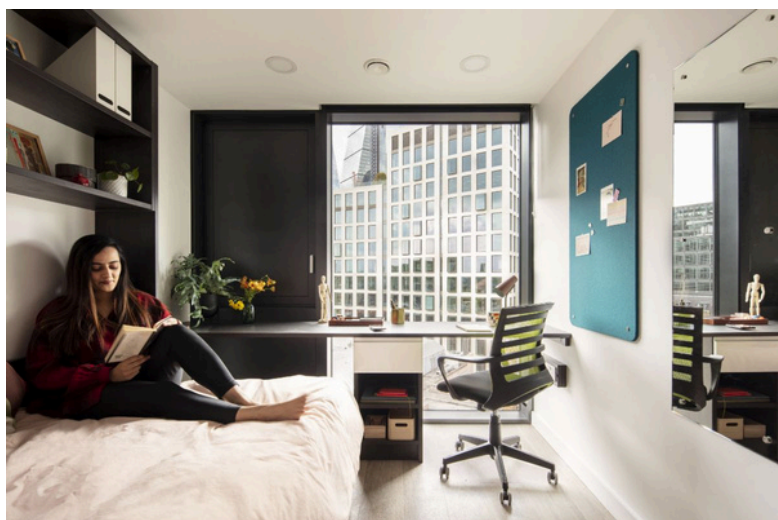
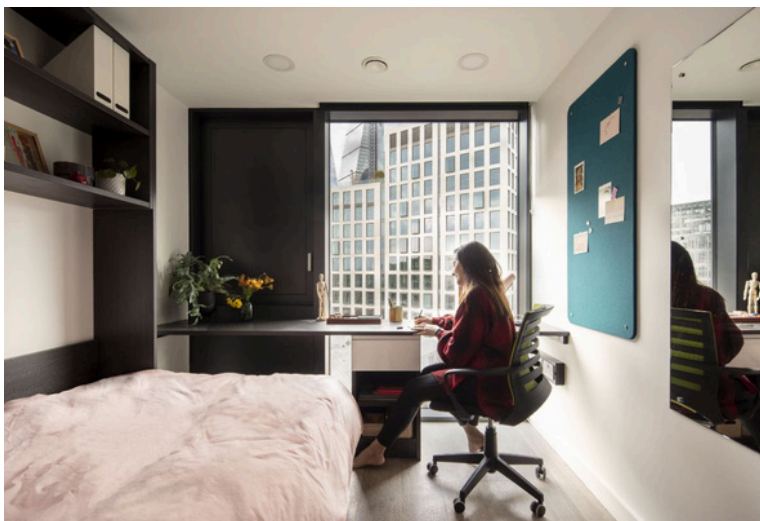
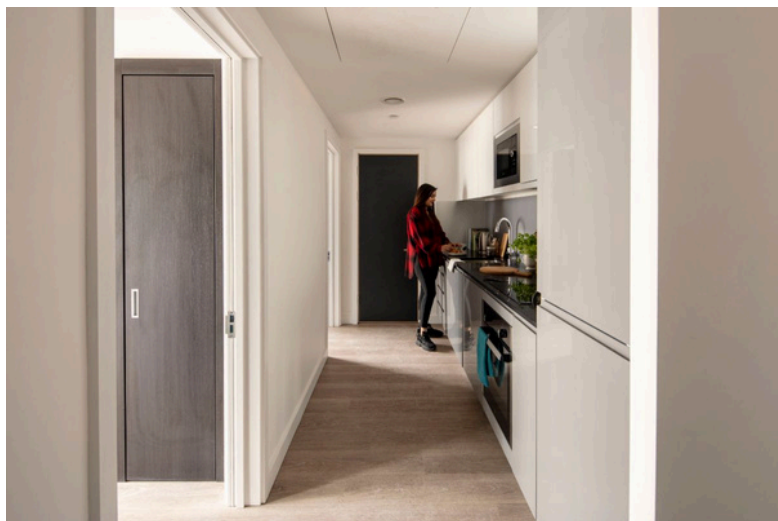
Each of the stunning lockable bedrooms features a built-in desk and desk chair in front of a panoramic window, a bed with memory foam mattress, lots of storage and under floor heating. In addition, each bedroom has a separate luxury en-suite shower room. The residents of this shared apartment share a large kitchen with island and living area including microwave/grill, ceramic hob, fan oven and a dishwasher.



All images and floor plans are indicative and specific rooms may differ slightly in layout and positioning.

Private room

A beautiful private, lockable bedroom sharing a kitchen and shower rooms with just others in a modern five or six-bedroom apartment. Featuring a built in desk, desk chair, wardrobe and a bed; our private rooms are perfect for sharing with friends (or making new ones) and excellent value for money.

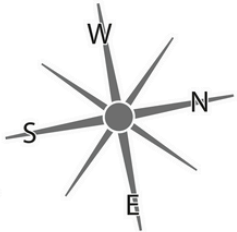


All images and floor plans are indicative and specific rooms may differ slightly in layout and positioning.

urbanest City

35 Vine Street,
London, EC3N 2PX

1st Floor



Key

Shower Room

Kitchen

En-Suite Room

Studio Apartment

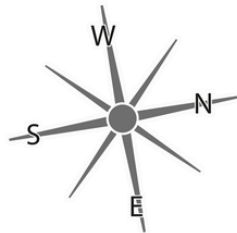
Private Room

Twin Room

urbanest City

35 Vine Street,
London, EC3N 2PX

2nd Floor

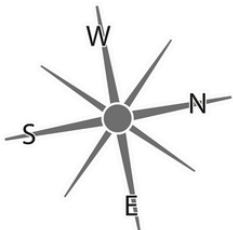


Key	
	Shower Room
	Kitchen
	En-Suite Room
	Studio Apartment
	Private Room
	Twin Room

urbanest City

35 Vine Street,
London, EC3N 2PX

3rd-6th Floors



Key

Shower Room

Kitchen

En-Suite Room

Studio Apartment

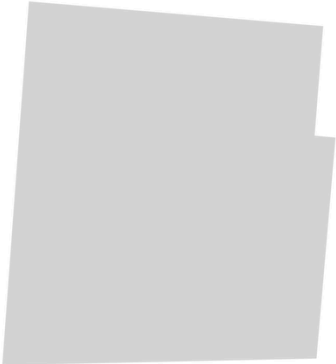
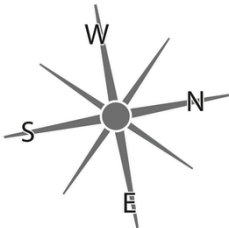
Private Room

Twin Room

urbanest City

35 Vine Street,
London, EC3N 2PX

7th Floor



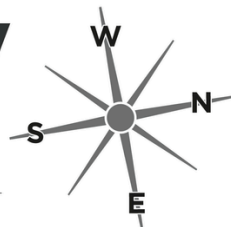
Key

- Shower Room
- Kitchen
- En-Suite Room
- Studio Apartment
- Private Room
- Twin Room

urbanest City

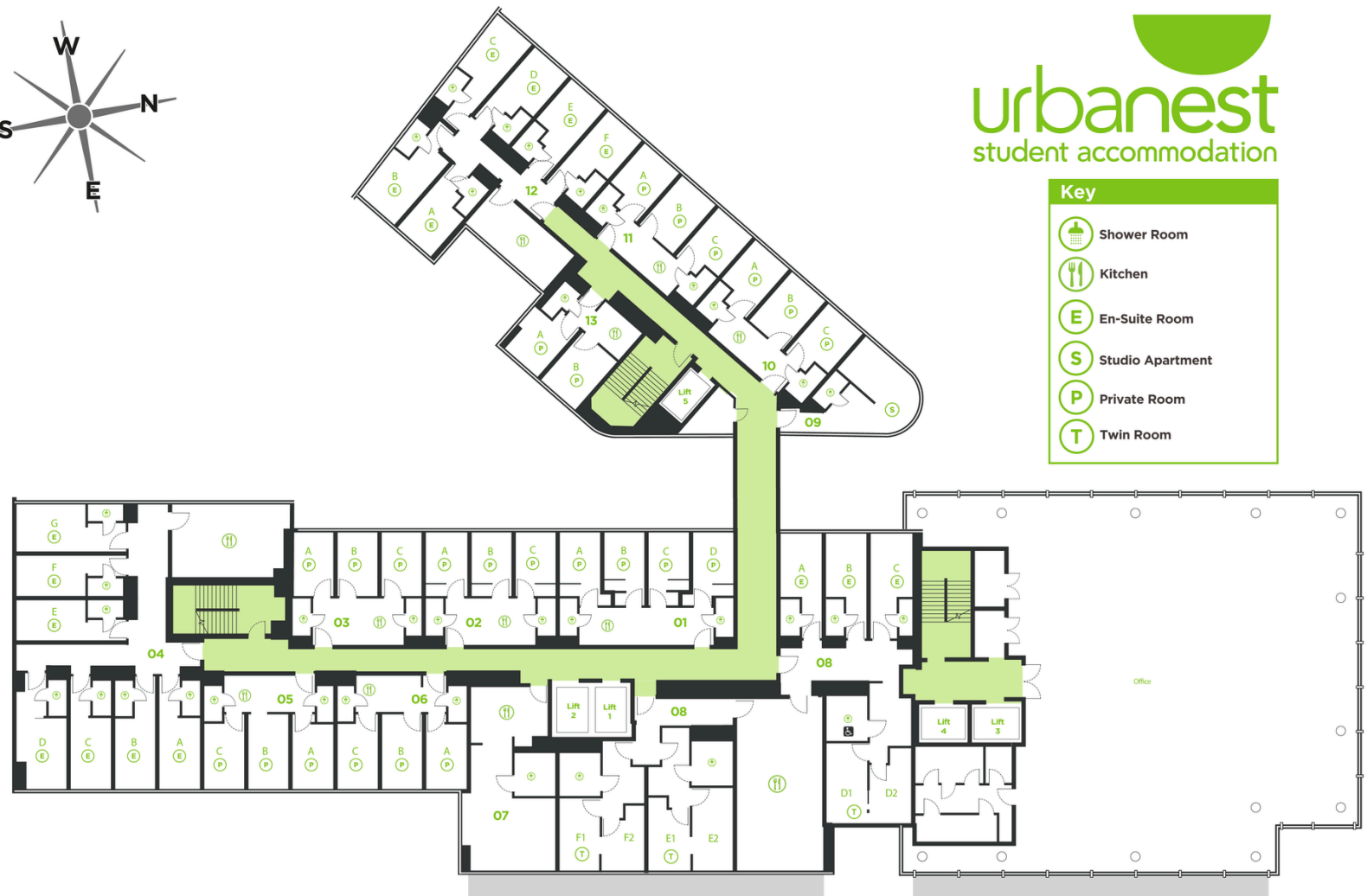
35 Vine Street,
London, EC3N 2PX

8th Floor



urbanest
student accommodation

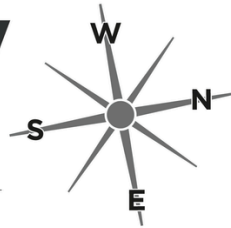
Key	
	Shower Room
	Kitchen
	En-Suite Room
	Studio Apartment
	Private Room
	Twin Room



urbanest City

35 Vine Street,
London, EC3N 2PX

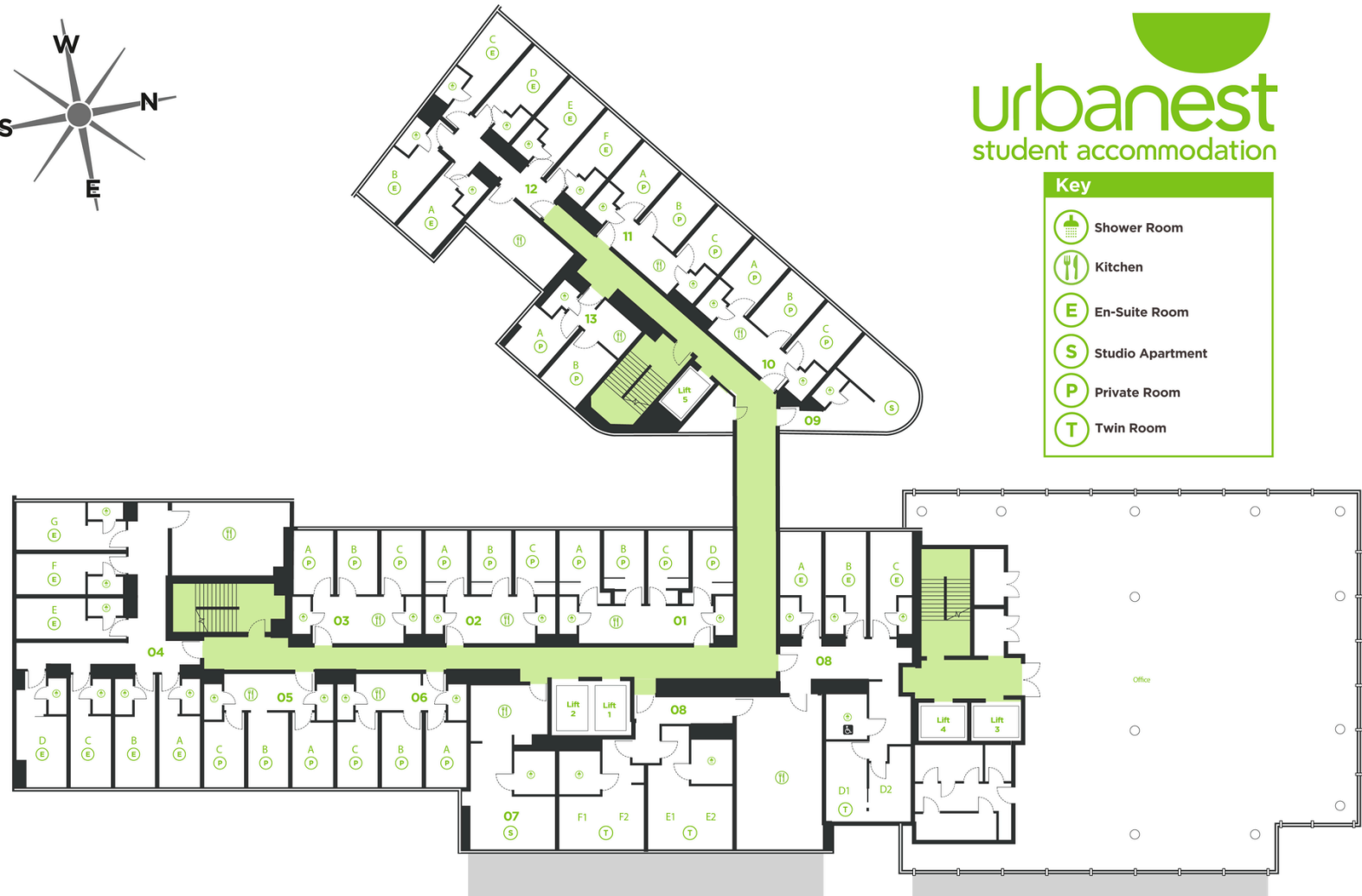
9th Floor



urbanest
student accommodation

Key

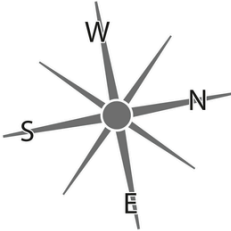
- Shower Room
- Kitchen
- En-Suite Room
- Studio Apartment
- Private Room
- Twin Room



urbanest City

35 Vine Street,
London, EC3N 2PX

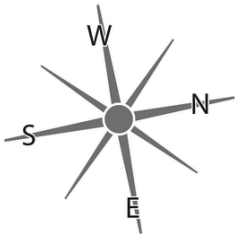
10th Floor



urbanest City

35 Vine Street,
London, EC3N 2PX

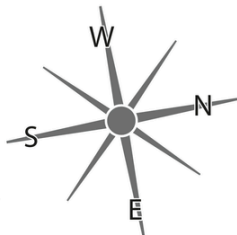
11th Floor



urbanest City

35 Vine Street,
London, EC3N 2PX

12th Floor



urbanest City

35 Vine Street,
London, EC3N 2PX

13th Floor

