





## Contents:

- 1** urbanest Hoxton
- 2** Transport Links
- 3** Distance To Universities
- 4** Room Specs
- 5-7** Room Types
- 8-11** Floor plans





# urbanest Hoxton

Our Hoxton accommodation offers a choice of 221 student beds arranged into self-contained studio apartments, two-bedroom apartments and flat shares of 6 en-suite rooms. All our student flats provide an array of facilities to make you feel at home whilst in London, including super-fast Wi-Fi that keeps you connected throughout the entire building. Superb study areas will help both individual and group studies.

There's a 7th-floor roof terrace that offers incredible views of London, and we have a great social space with flat-screen television – perfect for social evenings and parties with your new friends!

We also have the convenience of a supermarket on-site enabling residents to stay stocked with everyday items. The ground floor also houses our bike storage facility. This is where we keep our fold-up bikes, available for our residents to use anytime to get around town – free of charge.

All the other facilities you would expect from high-quality student accommodation, such as laundry rooms, fitness rooms, and a 24/7 support team.

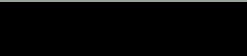
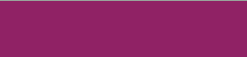




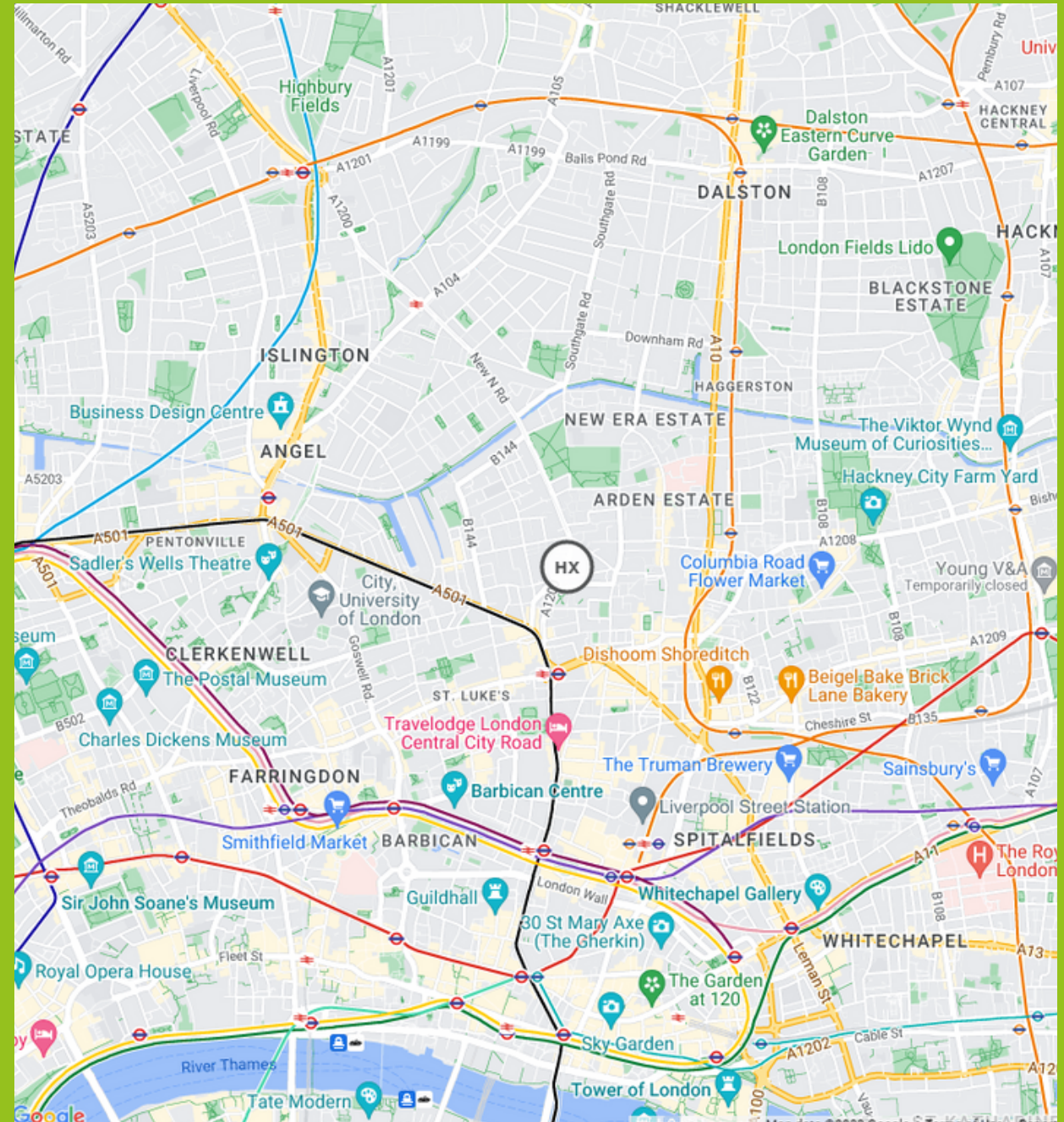


# Transport Links

Located in thriving East London, our Hoxton location is excellent for transportation links. There are frequent daily and night buses from a bus stop outside our Hoxton accommodation on East Road, and Old Street tube station is just a five-minute walk away. It's on the Northern line, so it's easy to access London Bridge or Tottenham Court Road in central London.

Hoxton station is a brisk ten-minute walk and connects you to the overground into north and east London like Dalston, Hackney, and Stratford. You can catch a bus or walk down to Shoreditch High Street for the infamous Brick Lane for thrifting, Box Park for delicious food and great music, or a little further afield, Spitalfields Market. Next to Spitalfields is Liverpool Street Station, a vast terminal station with links to the London Overground, underground lines: Circle, Hammersmith, City, and Central, and trains to Essex. This is one of the best-connected spots in London, and you're less than an hour away from anywhere you want to be!

-  Northern Line
-  Metropolitan Line
-  Overground
-  Elizabeth Line





# Distance To Universities



Our Hoxton student accommodation is ideally located as a convenient base for many of the London universities. It takes around half an hour to walk to many universities, such as the Guildhall School of Music and Drama, Coventry University London, York St John London, and Newcastle University London. Our Hoxton student accommodation is also near Old Street tube station, which is on the Northern line and can connect you to Kings Cross for the following universities:

- Central Saint Martins
- Royal Veterinary College
- University College London
- King's College London

A few more stops on the tube bring you very close to many of London's major universities and colleges:

- London School of Economics
- SOAS
- London Film School
- London Metropolitan
- Birbeck
- Queen Mary University of London

From walking to public transport, the universities near Tower Bridge student accommodation are:

- Coventry University
- Newcastle University London
- Queen Mary University



# Room Specs

Rooms within larger apartments have shared kitchen facilities. The kitchen has everything you need including a fridge/freezer, microwave oven, ceramic hob, extensive cupboard space, stone worktops and a dishwasher. These apartments also have shared living areas which are great spaces for making new friends. The bathroom facilities are also of the highest specification.

Whichever of the student accommodation types you choose in our Hoxton site, all of our rooms have super comfortable beds with a high-quality memory foam mattress to give you a great night's sleep and every room has luxurious under-floor heating which is controlled by an individual thermostat in your room to keep you warm in the winter months. Super-fast broadband keeps you connected and the entire building (including all study and social areas) benefits from free Wi-Fi.

In addition, the rooms are extremely well appointed in general with every student benefiting from a spacious, fitted study desk, plenty of storage for clothes, shoes and books and, depending on the room you choose, either a private or a shared kitchen with first-class appliances.

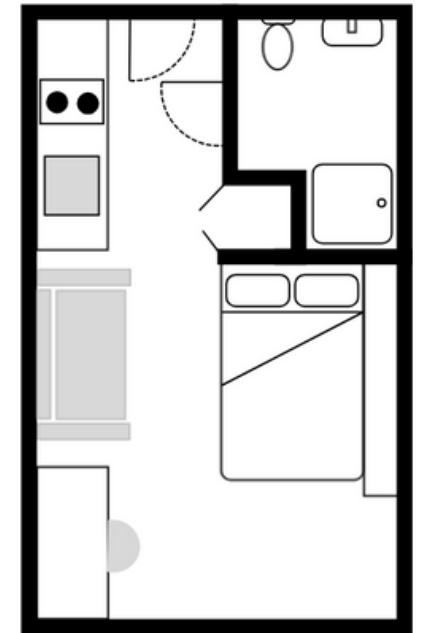
HOXTON	STUDIO	SHARED FLAT
<b>KITCHEN</b>		
Hob	✓	✓
Convection Oven	✗	✓
Microwave	✓	✓
Dishwasher	✓	✓
Fridge-Freezer	✓	✓
Storage Space	✓	✓
Kitchen Bin	✗	✓
Pots/ Pans	✗	✗
Cutlery/ Crockery	✗	✗
Laundry Facilities	On-site	On-site
Blinds/ Curtains	✓	✓
Internet (up to 200 mbps)	✓	✓
<b>BEDROOM</b>		
Bed Size (in cm)	120 x 190	90 x 190
Desk & Desk Chair	✓	✓
Lamp / Reading Light	✓	✓
Blinds / Curtains	✓	✓
Wardrobe	✓	✓
Wastepaper Bin	✓	✓
Mattress	✓	✓
Bedding	✗	✗
Shelf Storage	✓	✓
Internet (up to 200 mbps)	✓	✓
Mirror	✓	✓





# Studio room

A spacious and modern studio apartment. Each Hoxton studio features a comfortable small double bed, built-in desk and desk chair, and galley kitchen with modern appliances, including a ceramic hob, microwave, fridge/freezer and dishwasher. There is also a seating area, plenty of storage and wardrobe space, and a shower finished to the highest standard. Perfect for those who need a little extra space or are looking for independent living.

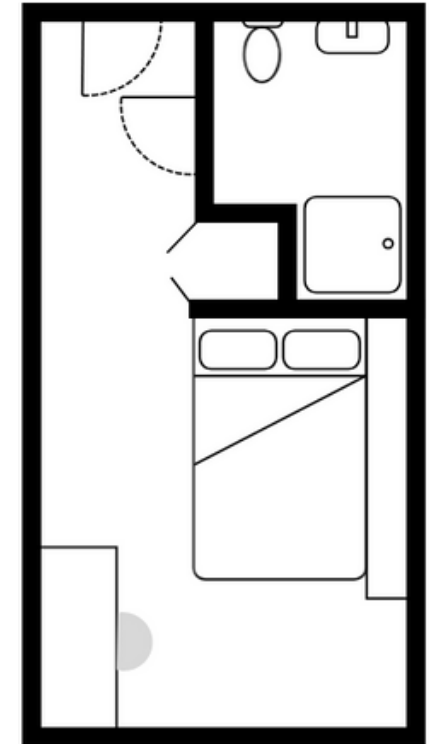


All images and floor plans are indicative and specific rooms may differ slightly in layout and positioning.



# En-suite room

An en-suite bedroom in a 6-person flat. Complete with your own private lockable room and luxury en-suite shower finished to the highest of standards. Each room shares a communal kitchen and lounge with 5 other residents. The modern kitchen has an oven, ceramic hob, microwave, fridge/freezer, lots of cupboard space, dining area, as well as a shared balcony in the flat. Our en-suite rooms are perfect for anyone sharing with a group of friends or looking to make new ones.

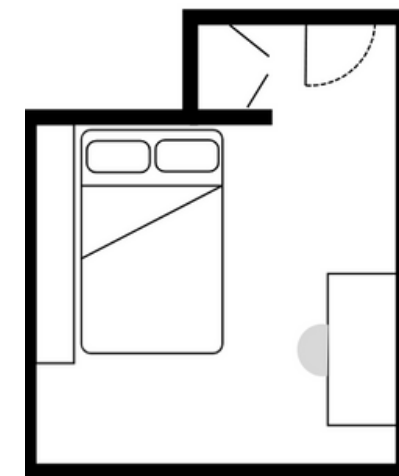


All images and floor plans are indicative and specific rooms may differ slightly in layout and positioning.



## Private room

A secure lockable bedroom in a 2-person flat sharing a shower room and a kitchen lounge with 1 other resident in the flat. The bedroom comes featured with a built-in desk, desk chair, comfortable single bed, wardrobe and storage space and underfloor heating. The kitchen comes equipped with a modern ceramic hob and oven, microwave/grill, fridge/freezer and lots of cupboard space. Our private rooms are perfect for anyone sharing with a friend or looking to share with just one other.



All images and floor plans are indicative and specific rooms may differ slightly in layout and positioning.

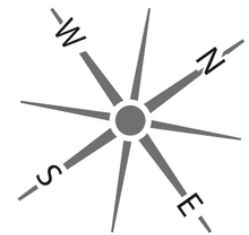


# urbanest Hoxton : 1

100 East Road, Hoxton  
London N1 6AA



Key	
	Shower Room
	Kitchen
	Private Room
	En-Suite Room
	Studio Apartment
	Large Studio Apartment





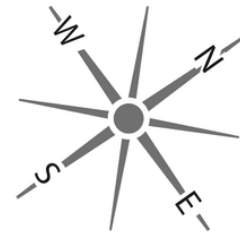
# urbanest Hoxton : 2

100 East Road, Hoxton  
London N1 6AA



Key

- Shower Room
- Kitchen
- Private Room
- En-Suite Room
- Studio Apartment
- Large Studio Apartment



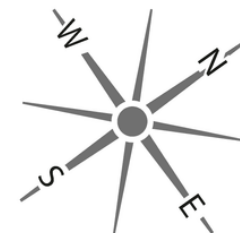


# urbanest Hoxton : 3-6

100 East Road, Hoxton  
London N1 6AA



Key	
	Shower Room
	Kitchen
	Private Room
	En-Suite Room
	Studio Apartment
	Large Studio Apartment





# urbanest Hoxton : 7

100 East Road, Hoxton  
London N1 6AA



Key	
	Shower Room
	Kitchen
	Private Room
	En-Suite Room
	Studio Apartment
	Large Studio Apartment

