



urbanest
kings cross

urbanest



Contents:

- 1** urbanest Kings Cross
- 2** Transport Links
- 3** Distance To Universities
- 4** Room Specs
- 5-6** Room Types
- 7-11** Floor plans



urbanest Kings Cross

King's Cross has plenty of amenities right at its door. Finding a place for food shopping is no hard task, with many options just a 5-minute walk away. There are also great takeaways, coffee shops and restaurants all around.

When it comes to student life at King's Cross, there's a lot to do and see. Not only is the King's Cross Quarter filled with amazing day and nightlife, but it's easy to get out and explore the excitement in the surrounding areas. Barnsbury sits to the north and is home to fantastic pubs and coffee shops. Clerkenwell and Islington are to the east, the latter of which is a cultural powerhouse, with must-visit locations like the Chinese Laundry and Arsenal FC. Holden is to the south, known for legal affairs and the Diamond Centre, and Euston (to the west) holds some of the best museums in the city. If you want to stay in King's Cross itself, there are lots to do. The Granary Square Fountains are a beautiful summer sight and a great way to cool off. At night they light up into an amazing show, so don't leave just because the sun's gone.



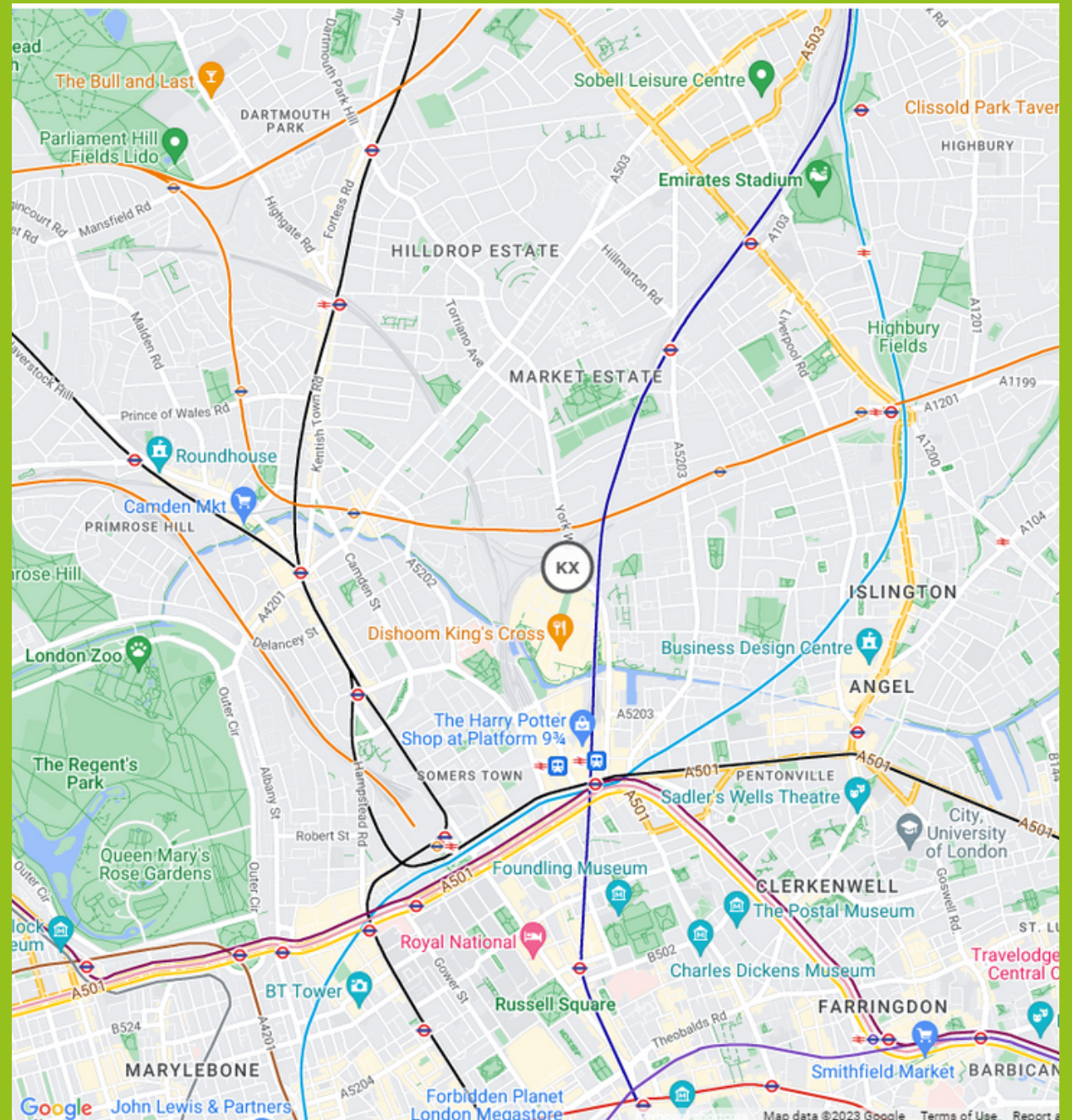
Transport Links

Located in the borough of Camden, King's Cross is one of the major transport links in the entire city. This makes it a fantastic spot for transport links both across and in or out of the capital. Our residents know a thing or two about how to get around urbanest King's Cross, but let's break down some basic information for you here!

Six London Underground lines stop at the station – Circle Line, Hammersmith and City, Metropolitan Line, Northern Line, Piccadilly Line and the Victoria Line), and the station itself is only a 12 minute walk away.

If you want to get out of London for a weekend, King's Cross is one of the big ways to do just that. Routes from the capital to Cardiff, Bristol, Manchester, Leeds, Edinburgh and more start at this location, making it a great start to any weekend adventure.

-  Hammersmith & City Line
-  Northern Line
-  Circle Line
-  Metropolitan Line
-  Victoria Line
-  Overground



Distance To Universities



urbanest King's Cross is perfectly located next to all the top London universities. . It's only a short walk to Central St. Martins, University College London, the University of London, and the Royal Veterinary College.

You can also travel a short distance and reach:

- London School of Economics
- King's College London
- Imperial College London
- London Metropolitan
- ...And more!

Room Specs

Rooms within larger apartments have shared kitchen facilities. The kitchen has everything you need including a fridge/freezer, microwave oven, ceramic hob, extensive cupboard space, stone worktops and a dishwasher. These apartments also have shared living areas which are great spaces for making new friends. The bathroom facilities are also of the highest specification.

Whichever of the student accommodation types you choose in our Tower Bridge site, all of our rooms have super comfortable beds with a high-quality memory foam mattress to give you a great night's sleep and every room has luxurious under-floor heating which is controlled by an individual thermostat in your room to keep you warm in the winter months. Super-fast broadband keeps you connected and the entire building (including all study and social areas) benefits from free Wi-Fi.

In addition, the rooms are extremely well appointed in general with every student benefiting from a spacious, fitted study desk, plenty of storage for clothes, shoes and books and, depending on the room you choose, either a private or a shared kitchen with first-class appliances.

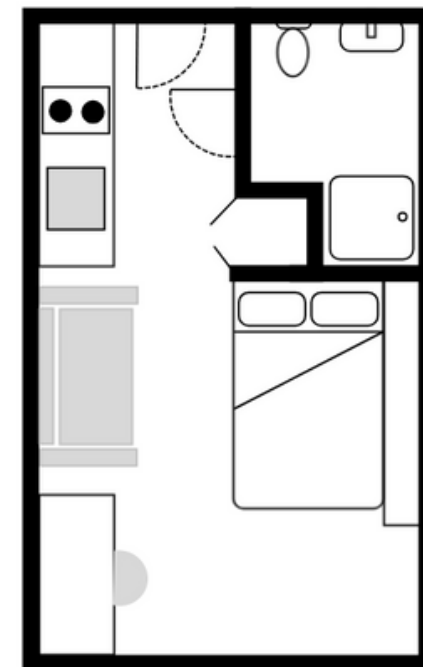
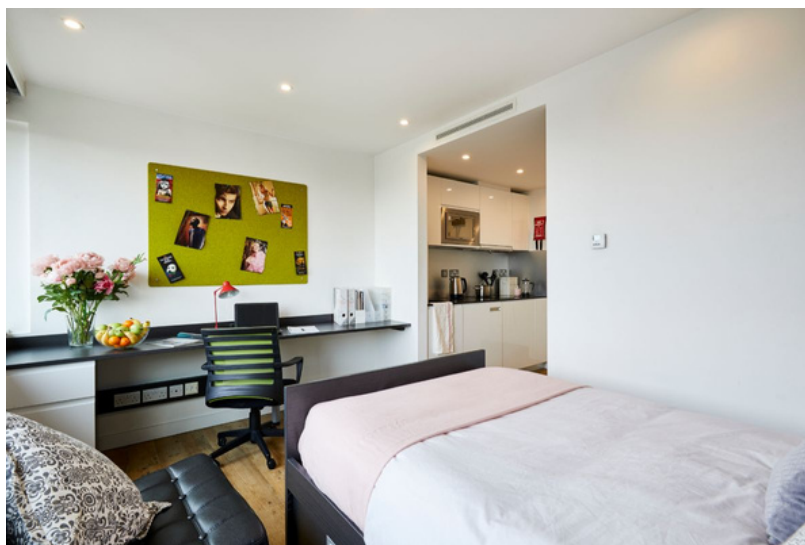
KINGS CROSS	STUDIO	SHARED FLAT
KITCHEN		
Hob	✓	✓
Convection Oven	✗	✓
Microwave	✓	✓
Dishwasher	✗	✓
Fridge-Freezer	✓	✓
Storage Space	✓	✓
Kitchen Bin	✗	✓
Pots/ Pans	✗	✗
Cutlery/ Crockery	✗	✗
Laundry Facilities	On-site	On-site
Blinds/ Curtains	✓	✓
Internet (up to 200 mbps)	✓	✓
BEDROOM		
Bed Size (in cm)	120 x 190	120 x 190
Desk & Desk Chair	✓	✓
Lamp / Reading Light	✓	✓
Blinds / Curtains	✓	✓
Wardrobe	✓	✓
Wastepaper Bin	✓	✓
Mattress	✓	✓
Bedding	✗	✗
Shelf Storage	✓	✓
Internet (up to 200 mbps)	✓	✓
Mirror	✓	✓



All images and floor plans are indicative and specific rooms may differ slightly in layout and positioning.

Studio room

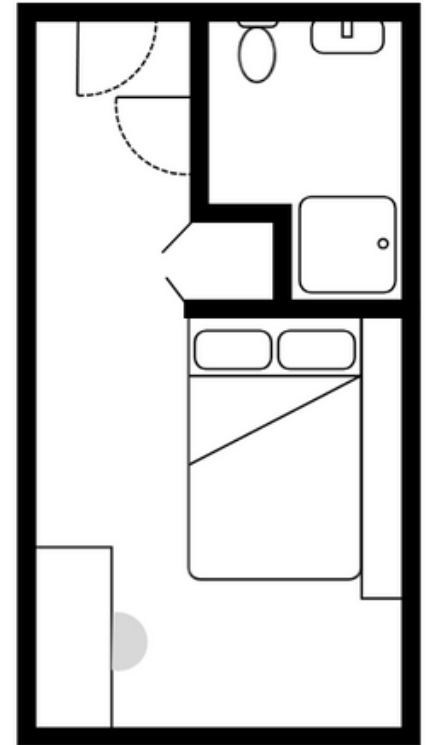
Each open plan apartment features a built-in desk and desk chair, a comfortable small double bed with memory foam mattress, wardrobe, lots of storage and even a panoramic window with incredible views of London. This studio apartment features a luxury shower room and a modern kitchenette featuring a ceramic hob, fridge/freezer, microwave/grill and plenty of storage space.



All images and floor plans are indicative and specific rooms may differ slightly in layout and positioning.

En-suite room

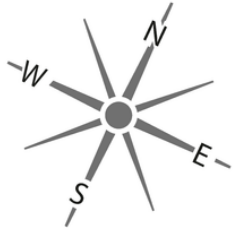
Each of the stunning lockable bedrooms features a built-in desk and desk chair in front of a panoramic window, a bed with memory foam mattress, lots of storage and under floor heating. In addition, each bedroom has a separate luxury en-suite shower room. The residents of this shared apartment share a large kitchen with island and living area including microwave/grill, ceramic hob, fan oven and a dishwasher.



All images and floor plans are indicative and specific rooms may differ slightly in layout and positioning.

urbanest King's Cross : 2-12

Canal Reach, King's Cross
London N1C 4BD



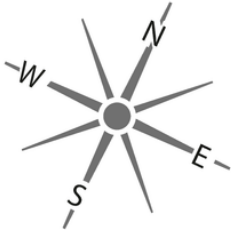
Key

- Shower Room
- Kitchen Room
- Private Room
- En-Suite Room
- Studio Apartment
- Large Studio Apartment



urbanest King's Cross : 13

Canal Reach, King's Cross
London N1C 4BD



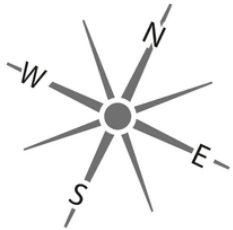
Key

- Shower Room
- Kitchen Room
- Private Room
- En-Suite Room
- Studio Apartment
- Large Studio Apartment

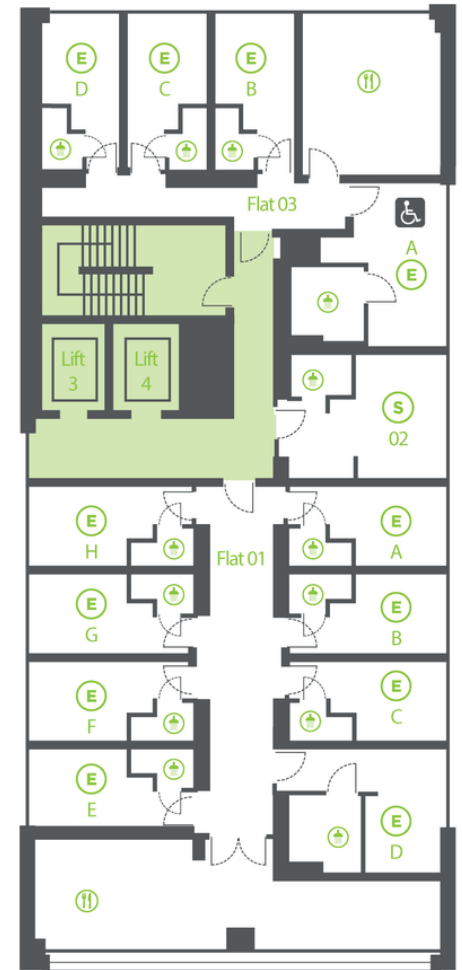


urbanest King's Cross : 14-24

Canal Reach, King's Cross
London N1C 4BD

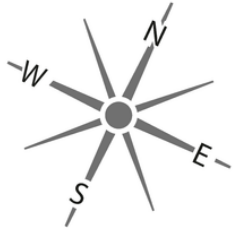


Key	
	Shower Room
	Kitchen Room
	Private Room
	En-Suite Room
	Studio Apartment
	Large Studio Apartment

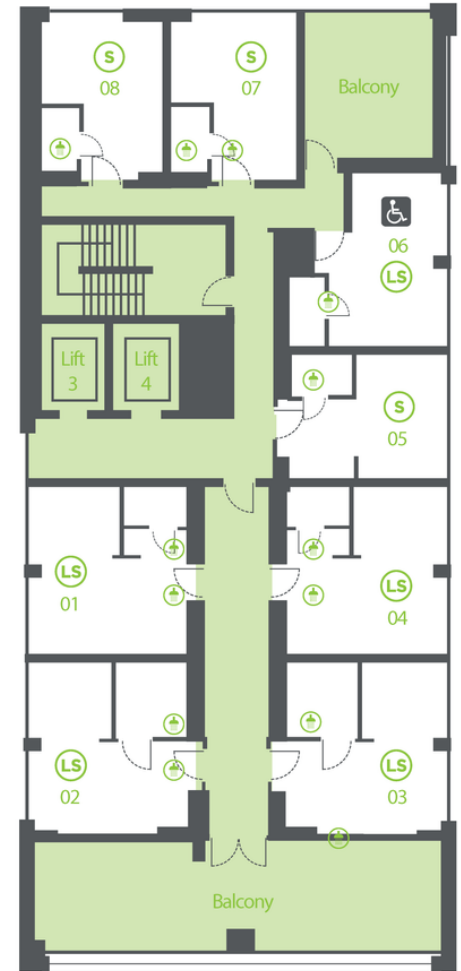


urbanest King's Cross : 25

Canal Reach, King's Cross
London N1C 4BD

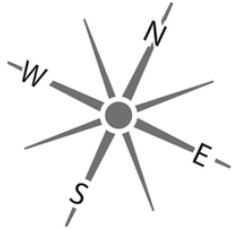


Key	
	Shower Room
	Kitchen Room
	Private Room
	En-Suite Room
	Studio Apartment
	Large Studio Apartment



urbanest King's Cross : 26

Canal Reach, King's Cross
London N1C 4BD



Key	
	Shower Room
	Kitchen Room
	Private Room
	En-Suite Room
	Studio Apartment
	Large Studio Apartment

