

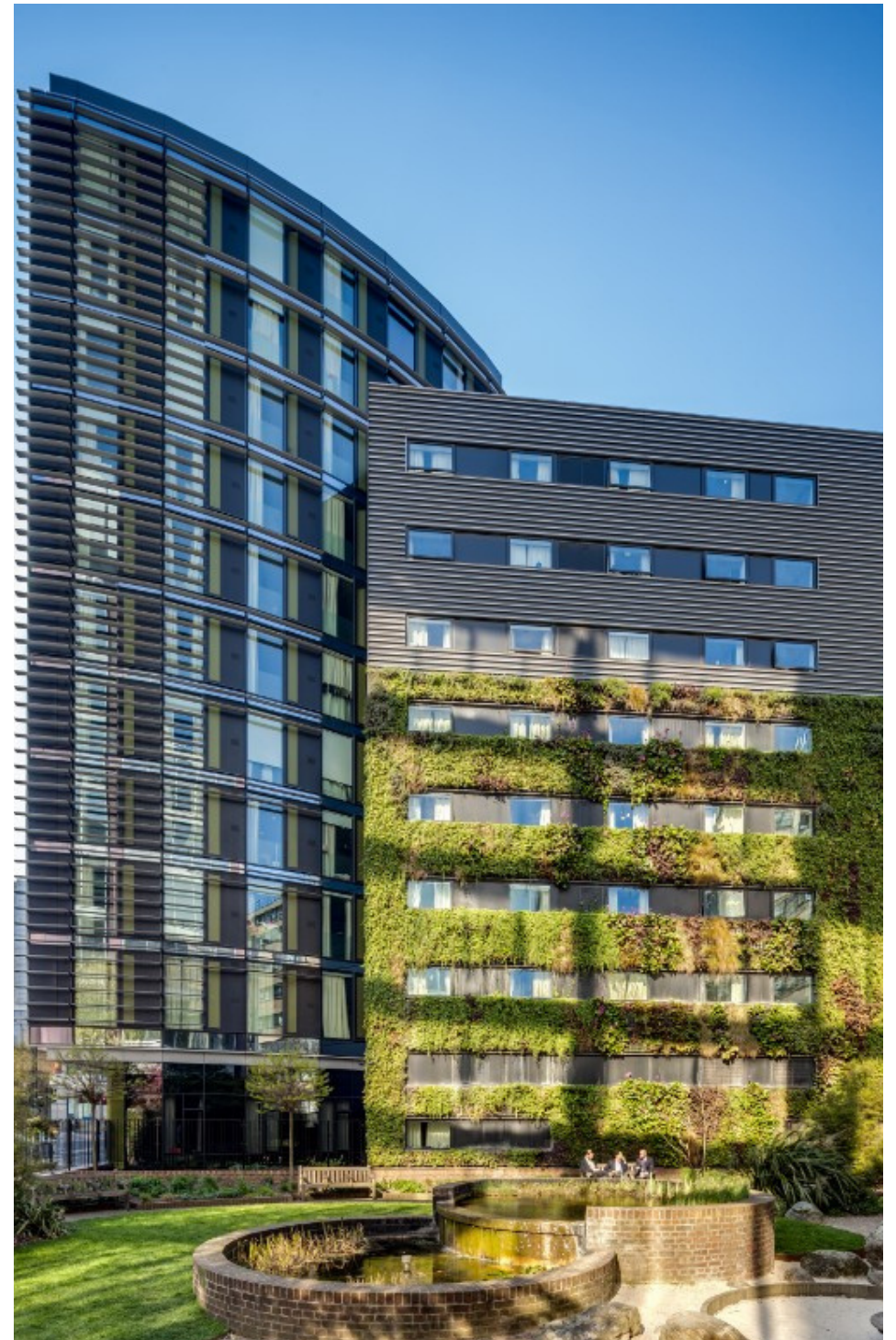


TB

Diverted traffic

Contents:

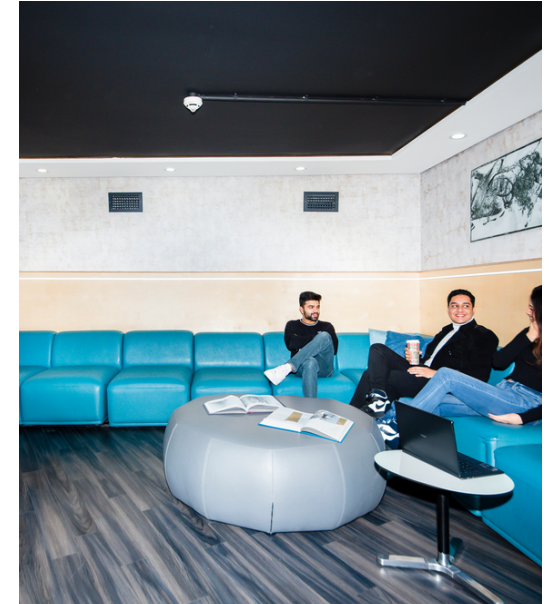
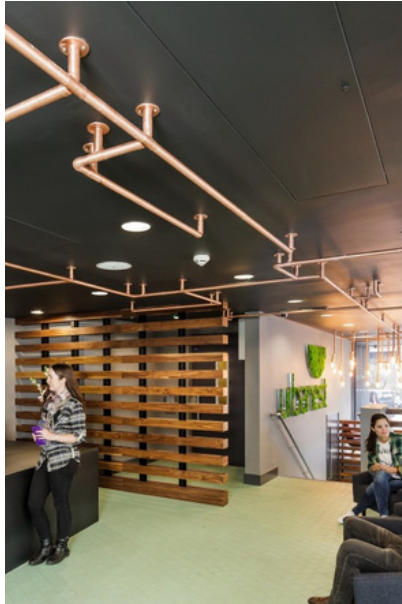
- 1** urbanest Tower Bridge
- 2** Transport Links
- 3** Distance To Universities
- 4** Room Specs
- 5-7** Room Types
- 8-12** Floor plans



urbanest Tower Bridge


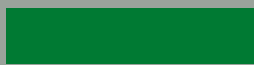

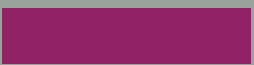


urbanest Tower Bridge offers students fantastic accommodation the heart of the historic City of London. A City within a City, this area is where the original Roman settlement was based and grew on the Banks of the Thames. Our student accommodation near London Bridge and other famous London landmarks, such as The Tower of London, St Paul's Cathedral and the Bank of England. A highly beautiful area of London that attracts many locals and tourists alike – making it one of the most “instagrammable” places in London.

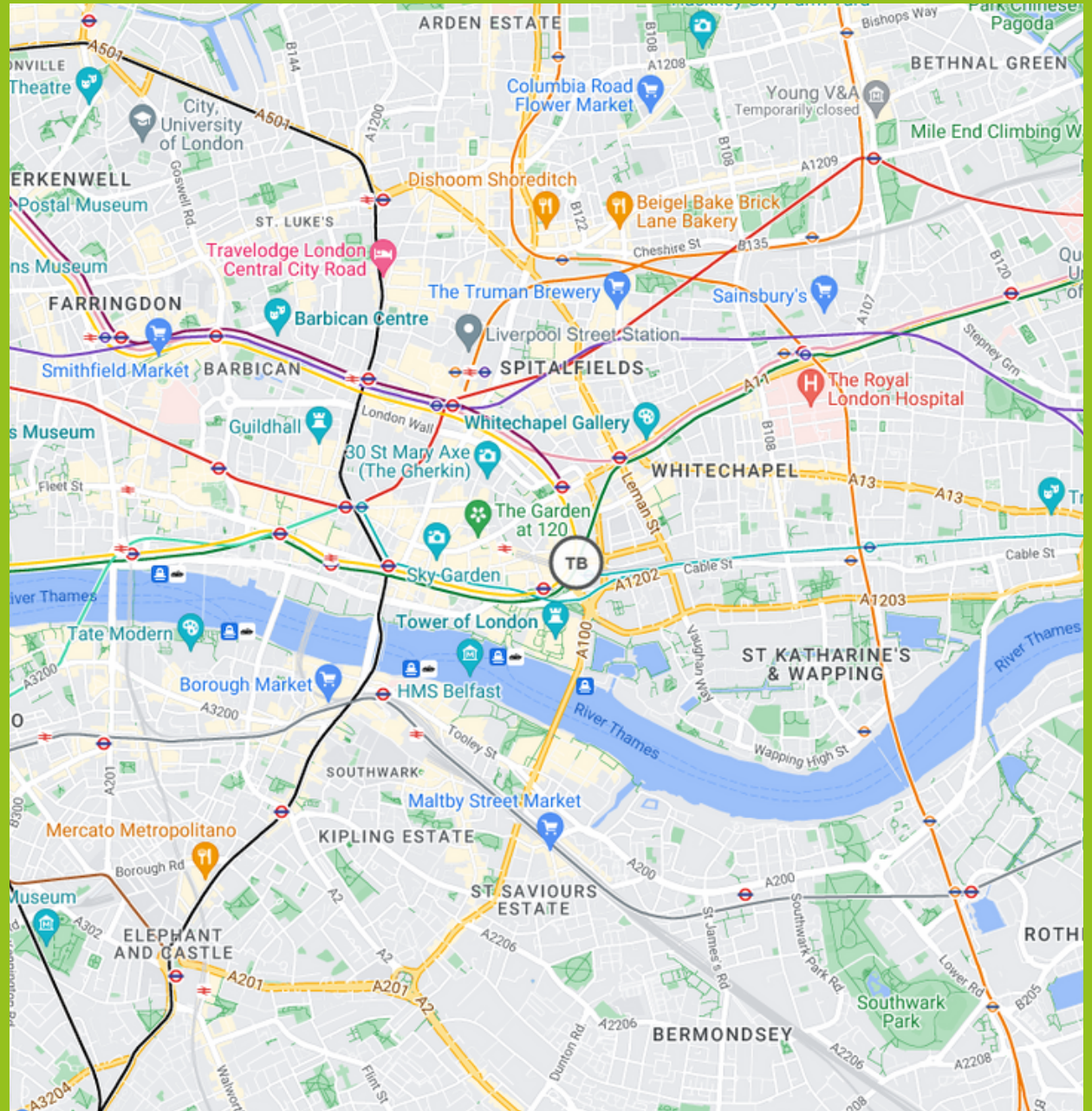
Our student accommodation in Tower Bridge offers a wide range of student living to suit all tastes and budgets. The accommodation is split between standard studio apartments, larger more spacious studio apartments and cluster flats offering sociable yet secure student living for groups of 2, 5, 6 or 9 people.



Transport Links

Tower Hill and Aldgate tube stations are a few minutes walk from urbanest Tower Bridge student accommodation and give easy access to the Circle Line, the District Line and the Metropolitan Line. Tower Gateway DLR station is also a 2-minute walk away and connects to Canary Wharf, East London and Greenwich to the south of the Thames. Given its central location, this student accommodation near London Bridge also benefits from many bus routes available from just outside the building that will take you right across the city. Tower Millennium Pier is also close by and can be accessed using London's fast-developing river taxi service. The transport links to and from urbanest Tower Bridge are fantastic which makes this student accommodation a great option for the academic year.

-  Hammersmith & City Line
-  District Line
-  Circle Line
-  Metropolitan Line
-  DLR
-  Elizabeth Line



Distance To Universities



Our Tower Bridge student accommodation is perfectly located close to many London universities. Tower Bridge is our closest property to Coventry University, Newcastle University London and New College of the Humanities, just within a roughly 15 mins walk away from each campus. Among others within a short journey.

From walking to public transport, the universities near Tower Bridge student accommodation are:

- Coventry University
- Newcastle University London
- Queen Mary University

Still not sure if Tower Bridge is the right place for you? Check out our guide on university specialisms to help you decide which institution is the best for your studies. It may turn out that one of our other London student accommodations is meant for you instead.

Room Specs

Rooms within larger 5 or 6 person apartments have shared kitchen facilities. The kitchen has everything you need including a fridge/freezer, microwave oven, ceramic hob, extensive cupboard space, stone worktops and a dishwasher. These apartments also have shared living areas which are great spaces for making new friends. The bathroom facilities are also of the highest specification.

Whichever of the student accommodation types you choose in our Tower Bridge site, all of our rooms have super comfortable beds with a high-quality memory foam mattress to give you a great night's sleep and every room has luxurious under-floor heating which is controlled by an individual thermostat in your room to keep you warm in the winter months. Super-fast broadband keeps you connected and the entire building (including all study and social areas) benefits from free Wi-Fi.

In addition, the rooms are extremely well appointed in general with every student benefiting from a spacious, fitted study desk, plenty of storage for clothes, shoes and books and, depending on the room you choose, either a private or a shared kitchen with first-class appliances.

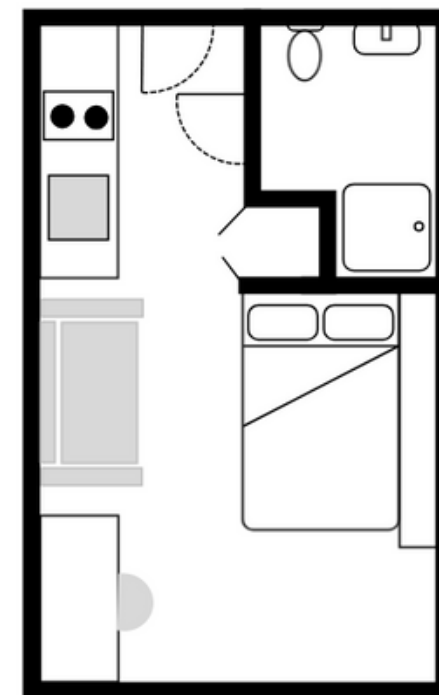
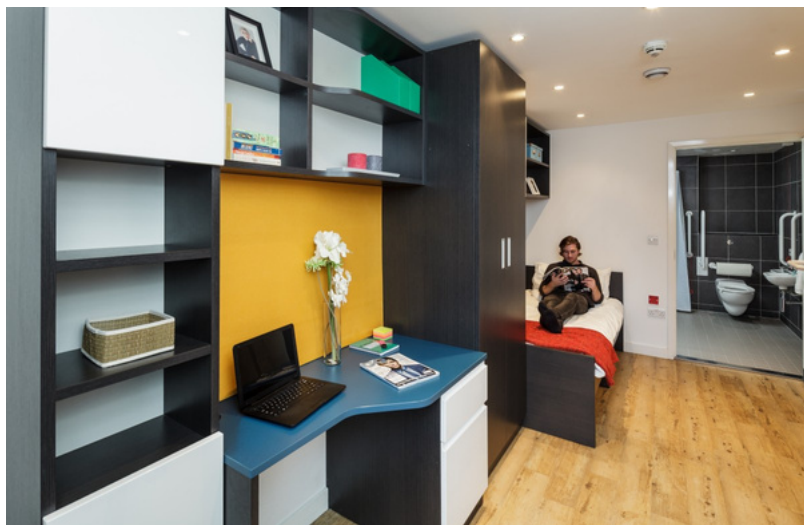
TOWER BRIDGE	STUDIO	SHARED FLAT
KITCHEN		
Hob	✓	✓
Convection Oven	✗	✓
Microwave	✓	✓
Dishwasher	✗	✓
Fridge-Freezer	✓	✓
Storage Space	✓	✓
Kitchen Bin	✗	✓
Pots/ Pans	✗	✗
Cutlery/ Crockery	✗	✗
Laundry Facilities	On-site	On-site
Blinds/ Curtains	✓	✓
Internet (up to 200 mbps)	✓	✓
BEDROOM		
Bed Size (in cm)	120 x 190	120 x 190
Desk & Desk Chair	✓	✓
Lamp / Reading Light	✓	✓
Blinds / Curtains	✓	✓
Wardrobe	✓	✓
Wastepaper Bin	✓	✓
Mattress	✓	✓
Bedding	✗	✗
Shelf Storage	✓	✓
Internet (up to 200 mbps)	✓	✓
Mirror	✓	✓



All images and floor plans are indicative and specific rooms may differ slightly in layout and positioning.

Studio room

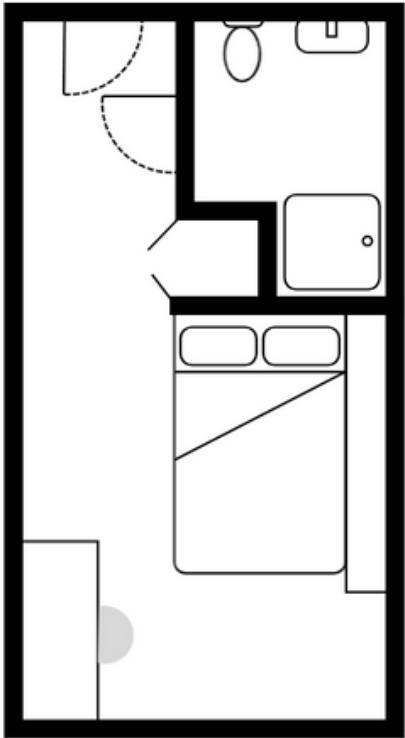
A spacious and modern studio apartment. Each studio features a small double bed with memory foam mattress, built-in desk and desk chair, underfloor heating, galley kitchen with modern appliances such as a ceramic hob, microwave/grill and fridge/freezer. There is also a seating area, spacious storage and wardrobe space. Our studio apartments are an excellent choice for independent living.



All images and floor plans are indicative and specific rooms may differ slightly in layout and positioning.

En-suite room

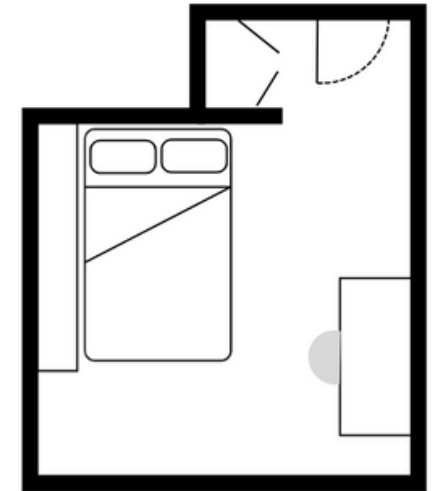
Complete with your own private lockable bedroom and luxury en-suite shower room – finished to the highest of standards. Each of these rooms in this apartment share a communal kitchen and lounge. The kitchen has an oven, ceramic hob, microwave, fridge/freezer, lots of cupboard space and dining area. Our en suite rooms are perfect for anyone sharing with friends or looking to making new ones.



All images and floor plans are indicative and specific rooms may differ slightly in layout and positioning.

Private room

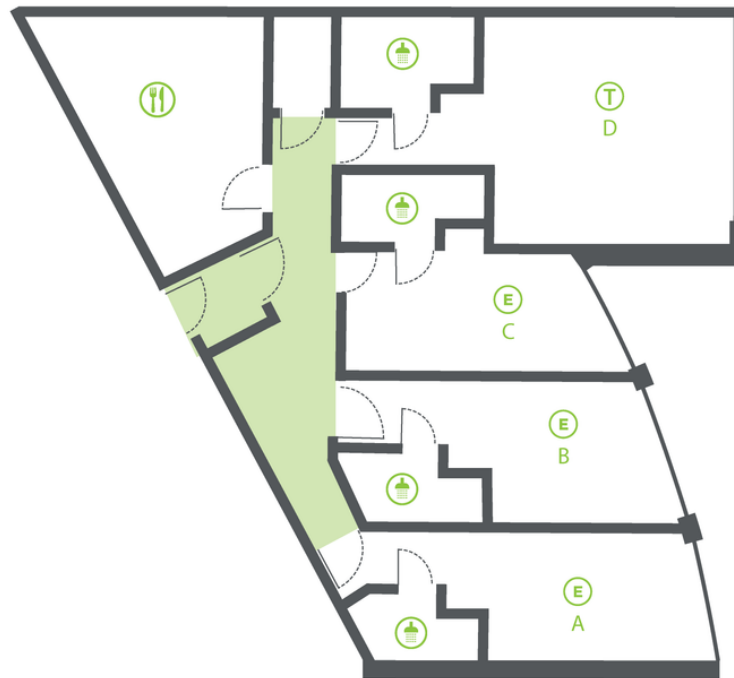
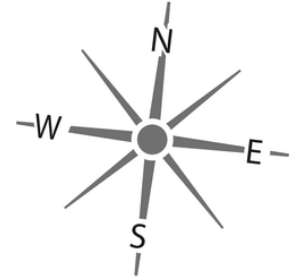
A beautiful private, lockable bedroom sharing a kitchen and 4 shower rooms with just others in a modern five or six-bedroom apartment. Featuring a built in desk, desk chair, wardrobe and a bed; our private rooms are perfect for sharing with friends (or making new ones) and excellent value for money.



All images and floor plans are indicative and specific rooms may differ slightly in layout and positioning.

urbanest Tower Bridge : G

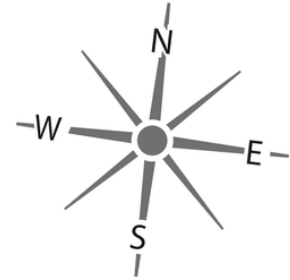
52 Minorities, City of London
London EC3N 1JA



Key	
	Shower Room
	Kitchen
	Private Room
	En-Suite Room
	Studio Apartment
	Large Studio Apartment
	Twin En-suite Room

urbanest Tower Bridge : 1

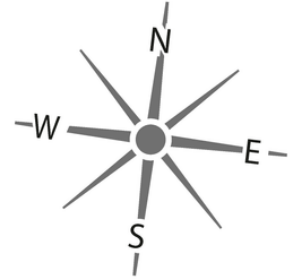
52 Minories, City of London
London EC3N 1JA



Key	
	Shower Room
	Kitchen
	Private Room
	En-Suite Room
	Studio Apartment
	Large Studio Apartment
	Twin En-suite Room

urbanest Tower Bridge : 2-5

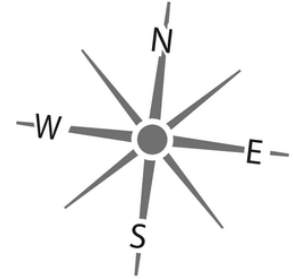
52 Minories, City of London
London EC3N 1JA



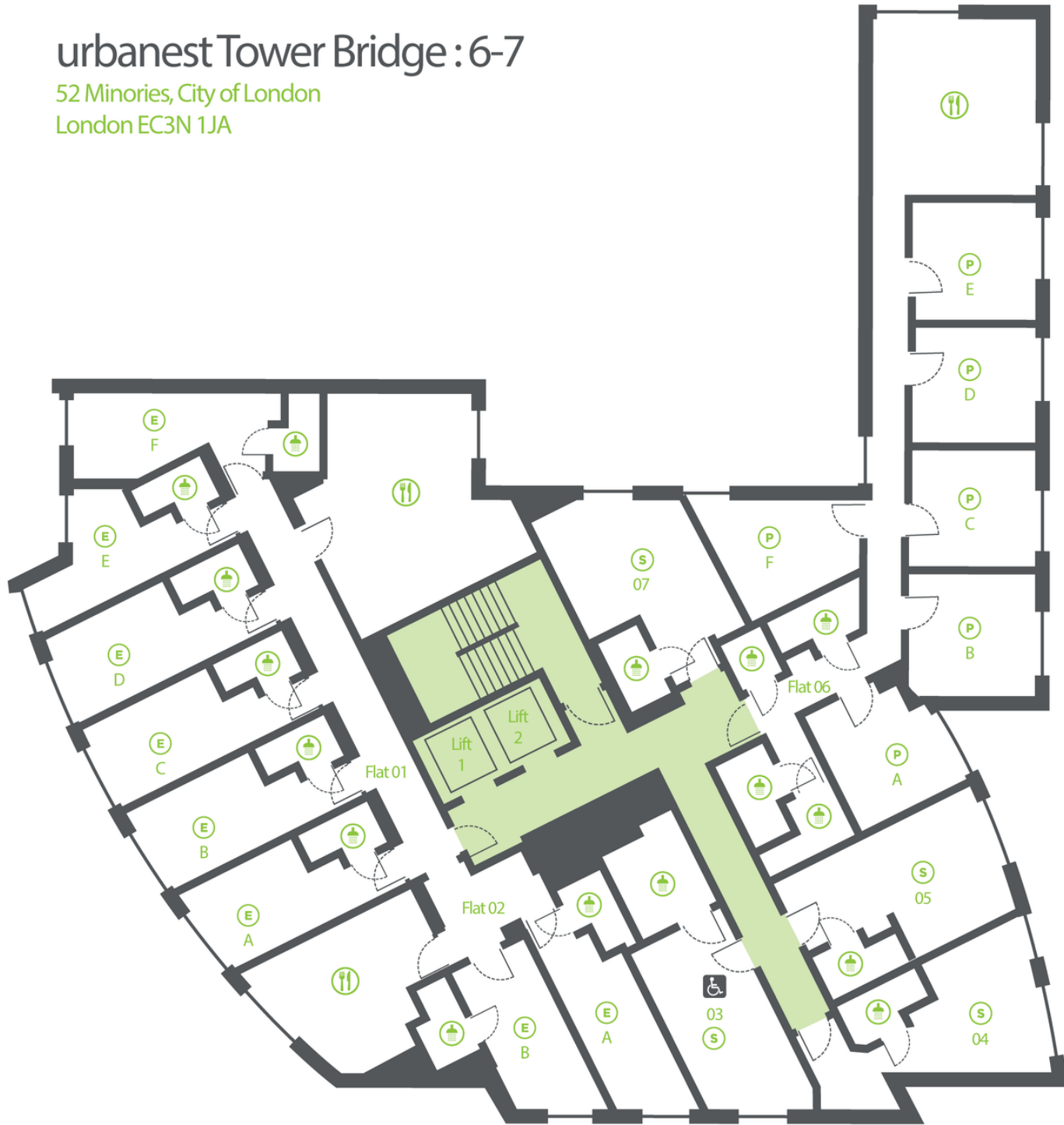
Key	
	Shower Room
	Kitchen
	Private Room
	En-Suite Room
	Studio Apartment
	Large Studio Apartment
	Twin En-suite Room

urbanest Tower Bridge : 6-7

52 Minorities, City of London
London EC3N 1JA

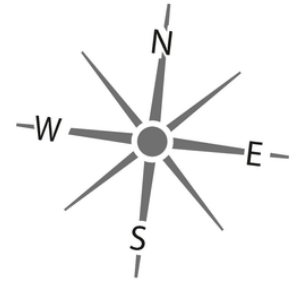


Key	
	Shower Room
	Kitchen
	Private Room
	En-Suite Room
	Studio Apartment
	Large Studio Apartment
	Twin En-suite Room



urbanest Tower Bridge : 8-10

52 Minories, City of London
London EC3N 1JA



Key	
	Shower Room
	Kitchen
	Private Room
	En-Suite Room
	Studio Apartment
	Large Studio Apartment
	Twin En-suite Room



