

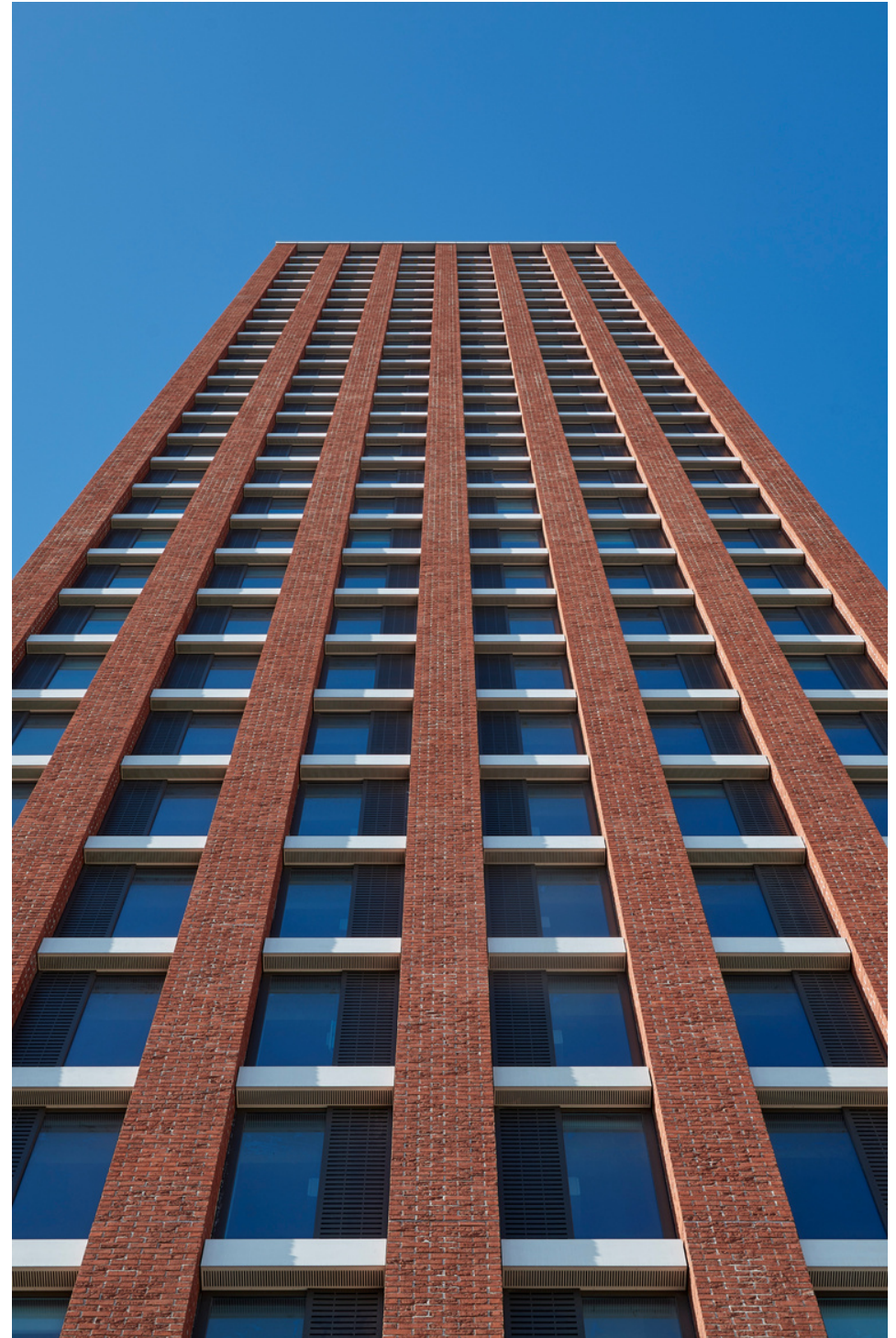


UNIVERSITY OF  
ALABAMA



## Contents:

- 1 urbanest Vauxhall
- 2 Transport Links
- 3 Distance To Universities
- 4 Room Specs
- 5 Room Types
- 6 Floor plans



# urbanest Vauxhall





Urbanest student accommodation Vauxhall is situated at the centre of Nine Elms. This is central London's newest, most exciting riverside quarter on the south bank of the River Thames. Already one of the most vibrant areas of zone 1, Vauxhall is set to become an even more dynamic, social and cultural hub with the arrival of the new American Embassy, the completion of the iconic Battersea Power Station and its numerous parks and riverside walks.

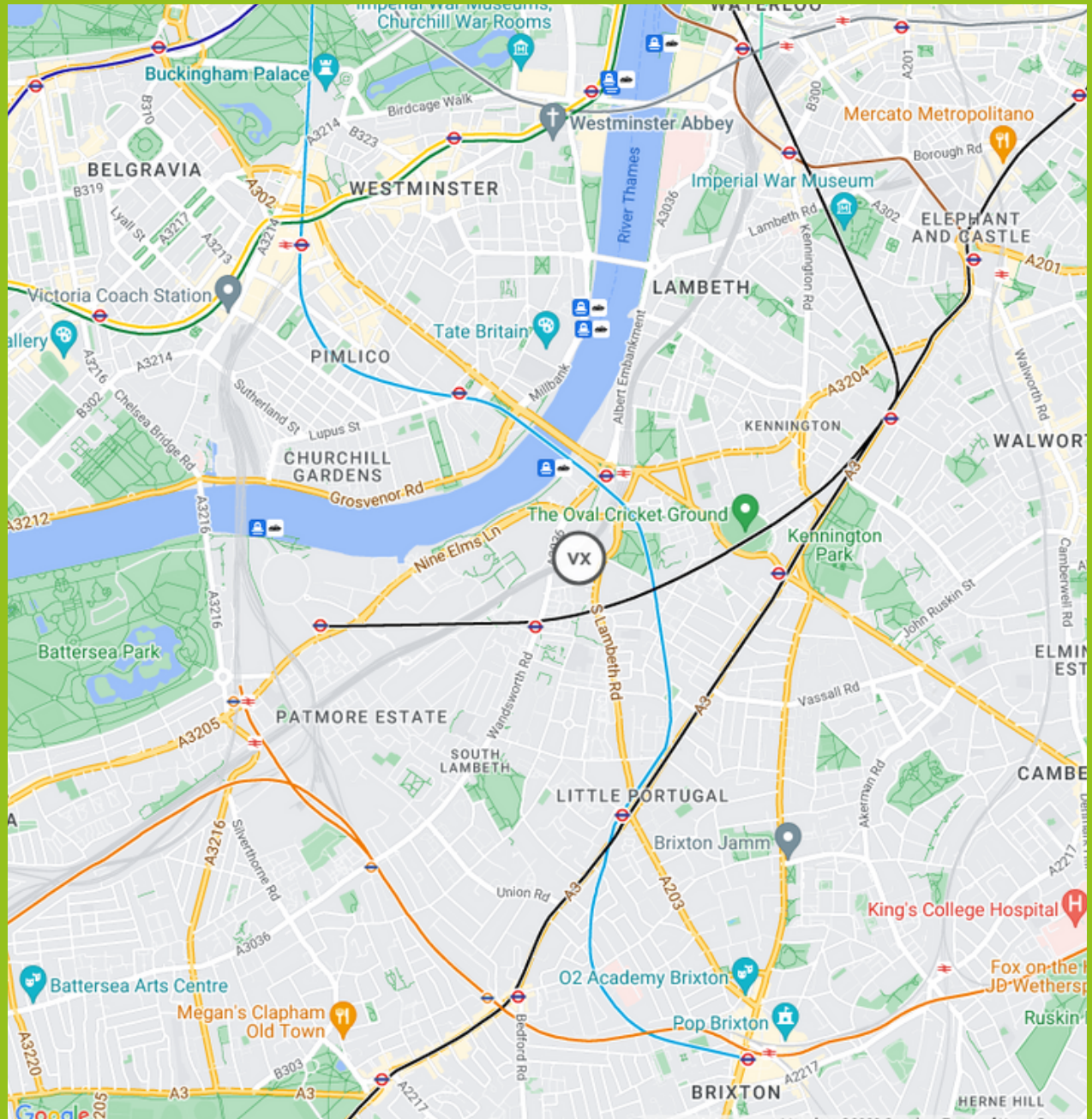
Urbanest student accommodation Vauxhall offers residents a range of facilities and features to make your stay in London as practical and comfortable as possible. Group and private study areas are available for all to use and a spectacular 31st-floor common room is available to all residents. This amazing 'common room in the clouds' is the perfect place to relax and watch TV or meet up with friends and enjoy a film on the cinema screen or just take in the stunning views of London. It also acts as an exciting venue for the parties, talks and other regular resident events arranged by the dedicated on-site urbanest team at our Vauxhall accommodation. Vauxhall has all facilities you would expect from a high-quality student accommodation, including modern, clean and efficient laundry rooms. The property also benefits from an enormous Sainsbury's Superstore just across the road to cater for all your grocery, home furnishing and accessory needs.



# Transport Links

Just a few minutes' walk from the front door of urbanest Vauxhall accommodation is the mainline railway station, the Victoria Line tube station and Cross bus station. As stated before, this puts all of London's major universities and colleges within easy reach, as well as many of London's major attractions. One of London's new cycle superhighways also runs right past our Vauxhall student accommodation, giving easy access to the West End for anyone who prefers to get around on two wheels.

-  Northern Line
-  Victoria Line
-  Overground
-  Bakerloo Line



# Distance To Universities



Our Vauxhall student accommodation is within close distance to several London universities, so no matter where you go to study, rest assured that you won't be living too far away.

Urbanest Vauxhall accommodation is a short bus ride or tube away from universities such as King's College London, making this great Vauxhall KCL accommodation. Other close universities to our student accommodation Vauxhall include London South Bank University (just 1.6 miles away) and Goldsmiths University of London (4.4 miles away).

Within 40 mins you can travel to lots of other London universities that are less than 10 miles away. Some other universities that are within a 10-mile radius of our Vauxhall student accommodation include:

- University of the Arts, London
- City University
- Imperial College London
- St George's Hospital Medical School
- University of Roehampton
- Kingston University

Vauxhall King's accommodation is best for KCL students, however, be sure to check out that Vauxhall is the right accommodation for you and your uni. It might be that one of our other London student accommodations is perfect for you instead!

# Room Specs

Every student staying at our Vauxhall student accommodation benefits from a spacious, fitted study desk, plenty of storage for clothes, shoes and books and, depending on the room you choose, either a private or a shared kitchen with first-class appliances. And thanks to urbanest Vauxhall's fantastic position on the south bank of the Thames, just south of Vauxhall Bridge, many of the rooms offer incredible views of central London and far and wide across South East England.

Urbanest student accommodation Vauxhall offers residents a range of facilities and features to make your stay in London as practical and comfortable as possible. Group and private study areas are available for all to use and a spectacular 31st-floor common room is available to all residents. This amazing 'common room in the clouds' is the perfect place to relax and watch TV or meet up with friends and enjoy a film on the cinema screen or just take in the stunning views of London. It also acts as an exciting venue for the parties, talks and other regular resident events arranged by the dedicated on-site urbanest team at our Vauxhall accommodation.

The building also benefits from a bicycle storage facility where we keep fold-up bikes, which are for the sole use of residents at any time to get around town - completely free of charge.

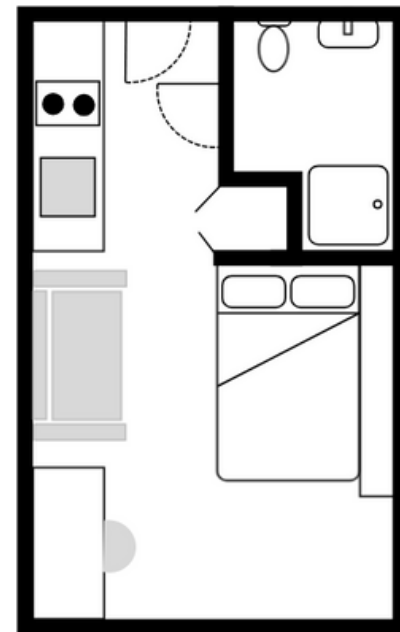
VAUXHALL	STUDIO	SHARED FLAT
<b>KITCHEN</b>		
Hob	✓	✓
Convection Oven	✗	✓
Microwave	✓	✓
Dishwasher	✗	✓
Fridge-Freezer	✓	✓
Storage Space	✓	✓
Kitchen Bin	✗	✓
Pots/ Pans	✗	✗
Cutlery/ Crockery	✗	✗
Laundry Facilities	On-site	On-site
Blinds/ Curtains	✓	✓
Internet (up to 200 mbps)	✓	✓
<b>BEDROOM</b>		
Bed Size (in cm)	120 x 190	120 x 190
Desk & Desk Chair	✓	✓
Lamp / Reading Light	✓	✓
Blinds / Curtains	✓	✓
Wardrobe	✓	✓
Wastepaper Bin	✓	✓
Mattress	✓	✓
Bedding	✗	✗
Shelf Storage	✓	✓
Internet (up to 200 mbps)	✓	✓
Mirror	✓	✓



All images and floor plans are indicative and specific rooms may differ slightly in layout and positioning.

# Studio room

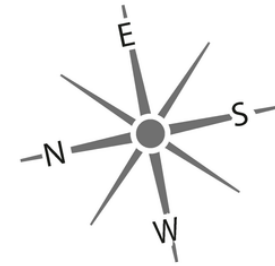
A spacious and modern studio apartment. Each studio features a small double bed with memory foam mattress, built-in desk and desk chair, underfloor heating, galley kitchen with modern appliances such as a ceramic hob, microwave/grill and fridge/freezer. There is also a comfortable seating area, spacious storage and wardrobe space. Our studio apartments are an excellent choice for independent living.



All images and floor plans are indicative and specific rooms may differ slightly in layout and positioning.

# urbanest Vauxhall : 5-30

5 Miles Street, Vauxhall,  
London SW8 1RZ



Key	
	Shower Room
	Kitchen
	En-Suite Room
	Studio Apartment
	Large Studio Apartment
	Private Room

